

FREQUENTLY ASKED QUESTIONS

COSEC

What
When
Which
Where
How
Who
Why



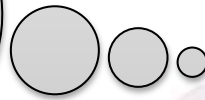
Date: 11th January 2015

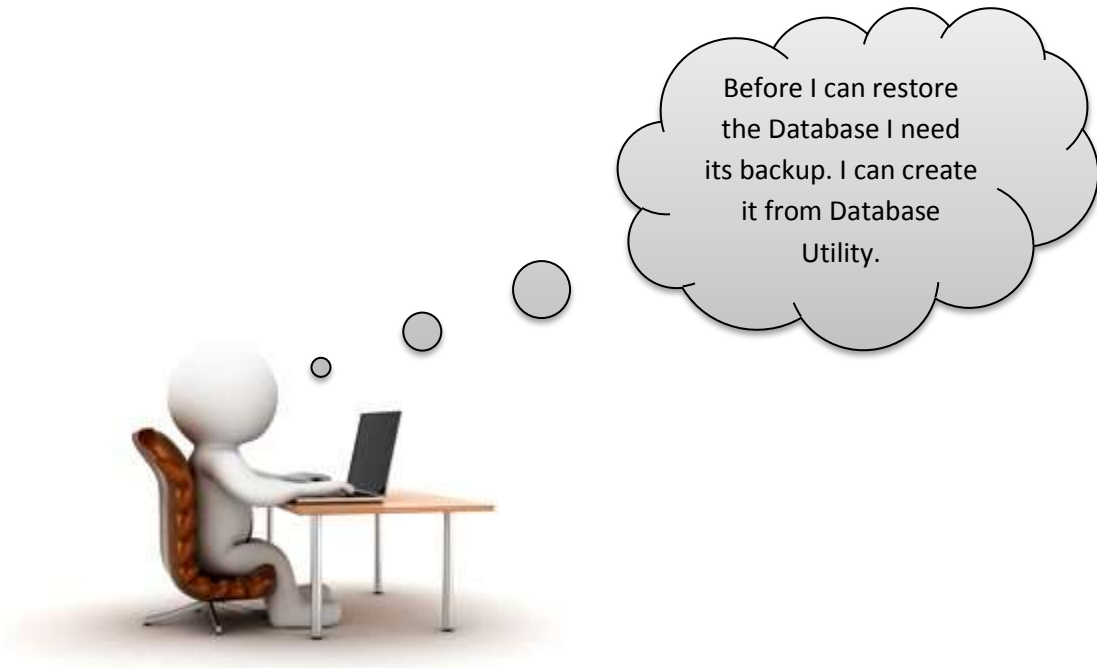
Version: V1R1

Author: Ankit Joshi

Backup and Restore SQL Database

We have invested for a new server. I have already installed all the COSEC Applications in the new Server. Now all I need to do is to restore the database so that I can get all my data on the new Server.





Before I can restore
the Database I need
its backup. I can create
it from Database
Utility.



Enter the Login Credentials

Login ID

Password

Matrix COSEC Database Utility

MATRIX COSEC Database Utility

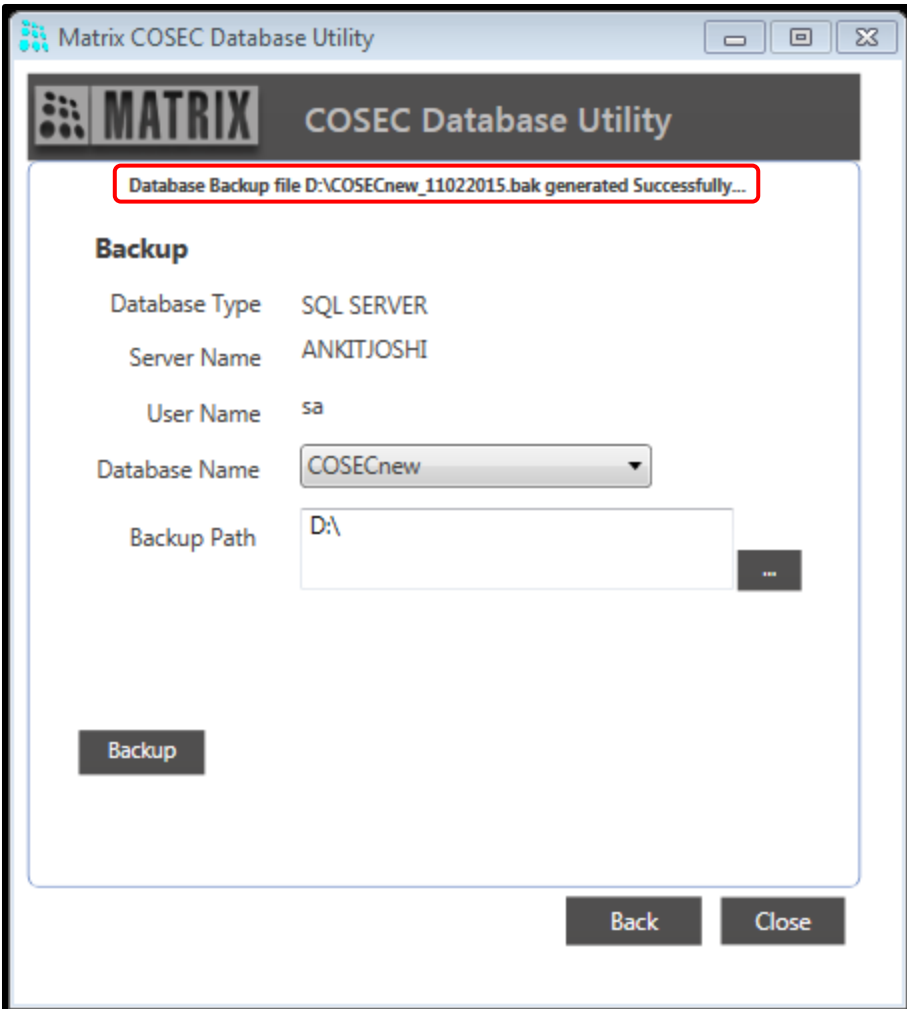
Backup

Database Type SQL SERVER
Server Name ANKITJOSHI
User Name sa
Database Name COSECnew
Backup Path D:\

Backup

Back Close

Select the desired path where the backup is to be stored





Enter the Login credentials for logging in to SQL Server

Microsoft SQL Server 2008 R2

Server type: Database Engine

Server name: ANKITJOSHI\SQLEXPRESSDEMO

Authentication: SQL Server Authentication

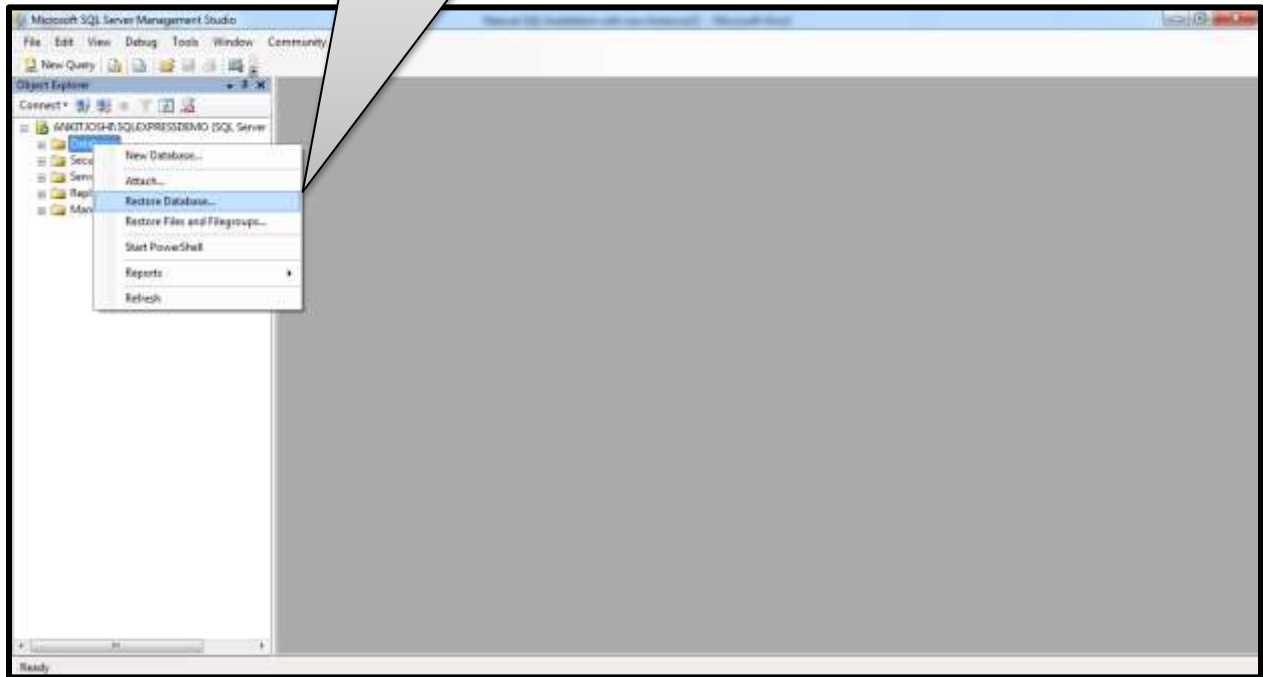
Login: sa

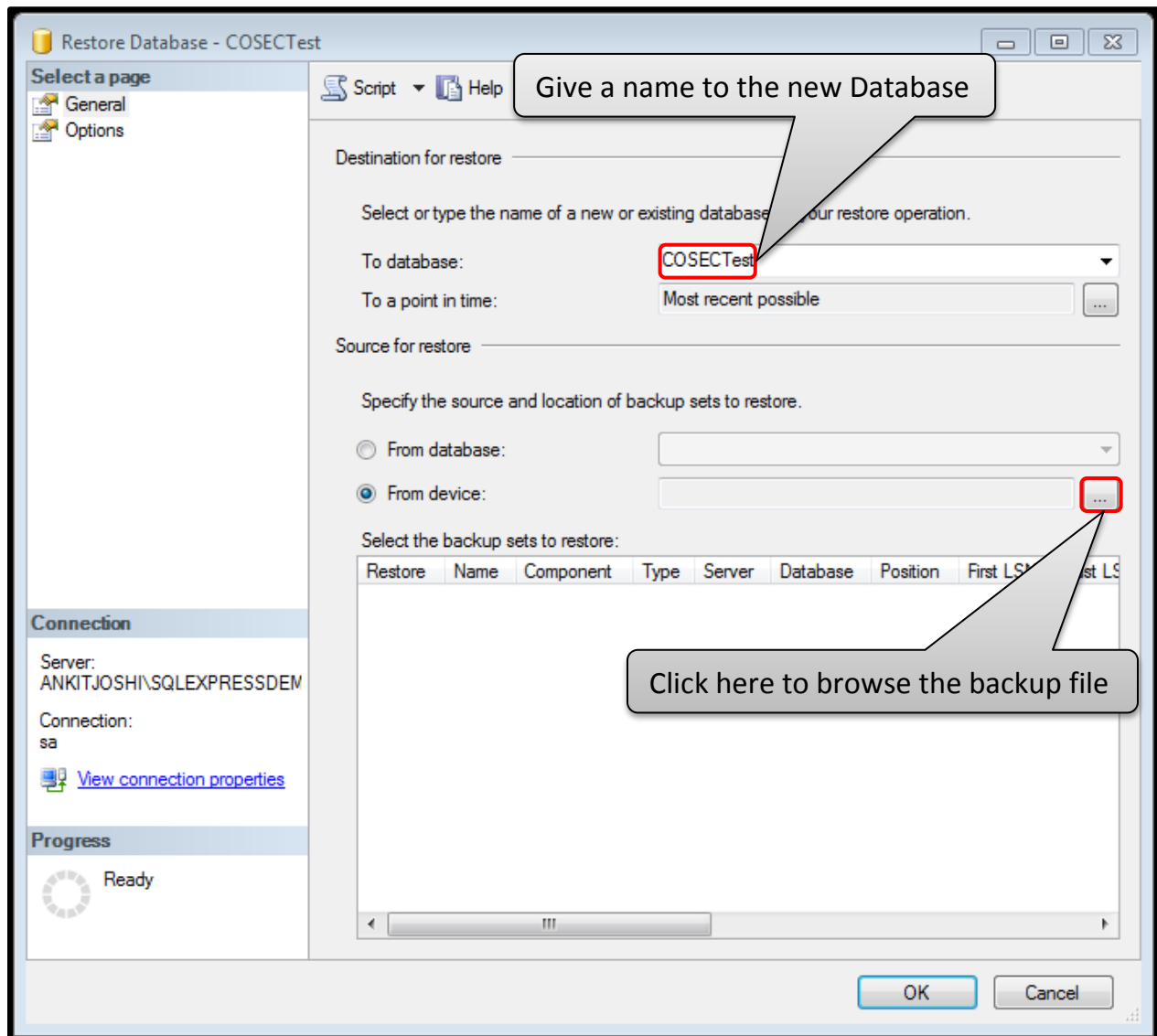
Password: *****

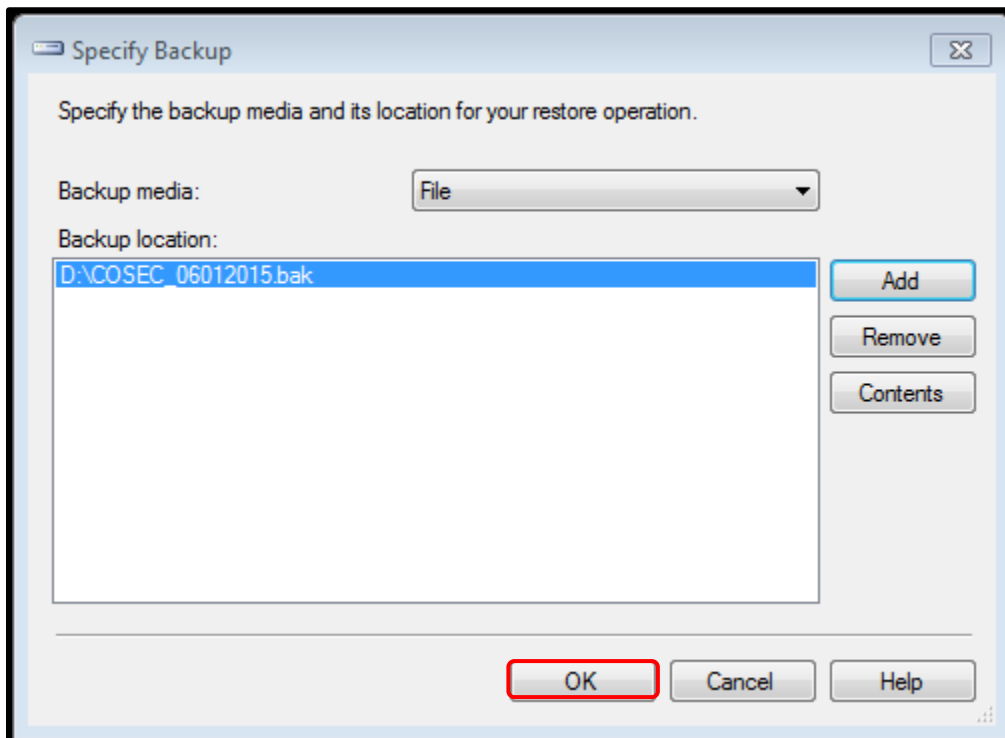
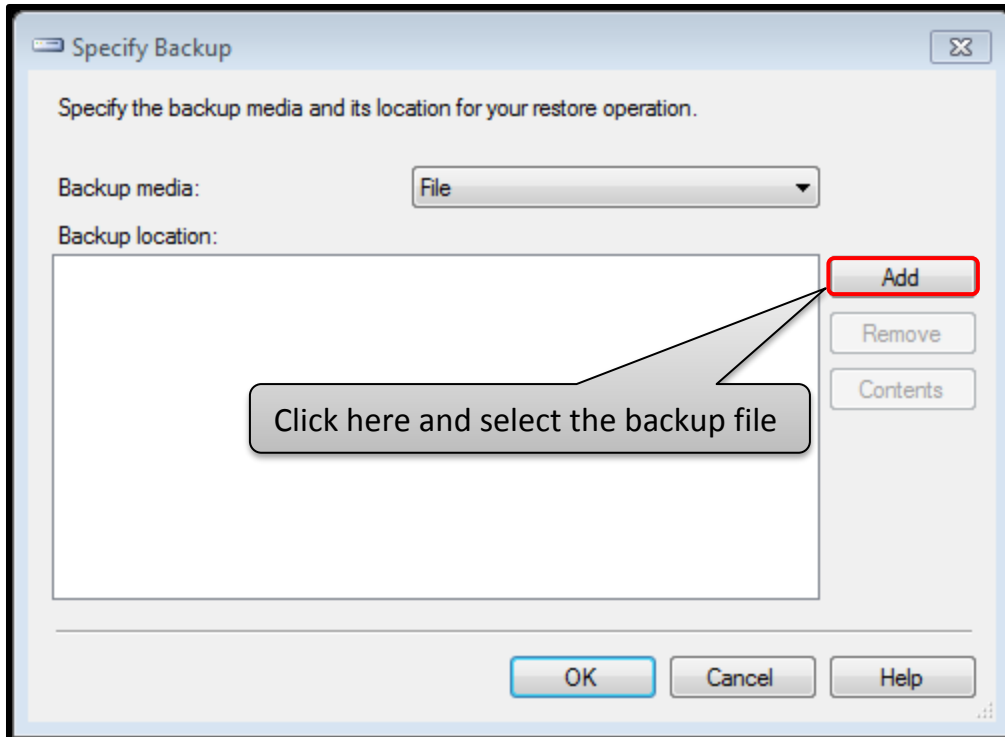
Remember password

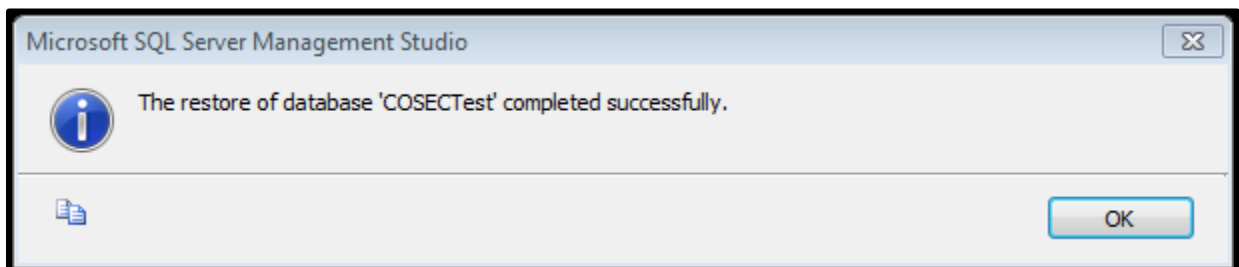
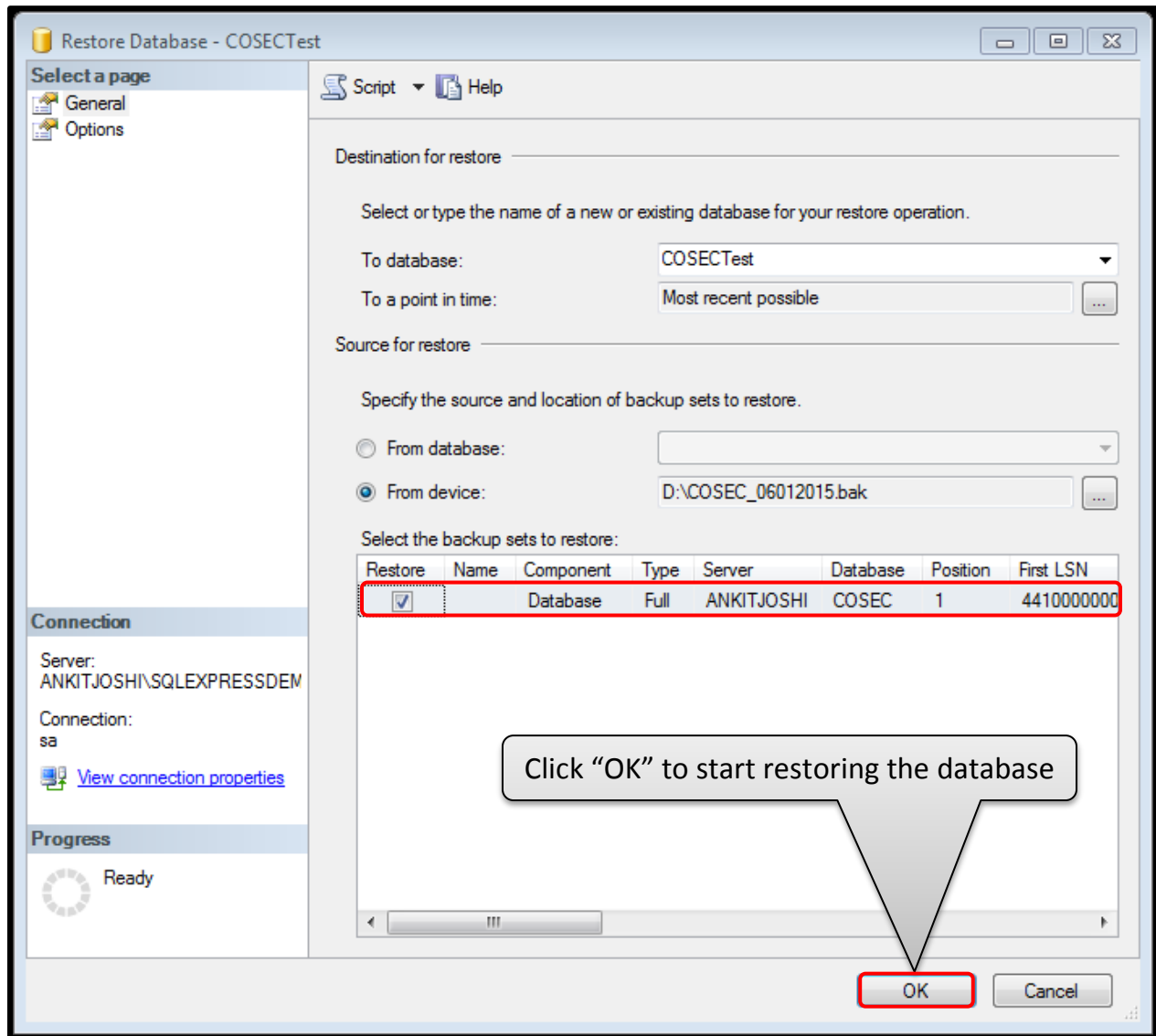
Connect Cancel Help Options >>

Right Click on Databases and
select Restore Database









For more information, contact
Matrix Technical Training Team
Training@MatrixComSec.com

Disclaimer: The information contained in this e-mail and/or attachment may contain confidential or privileged information. Unauthorized use, disclosure or copying is strictly prohibited and may constitute unlawful act and can possibly attract legal action, civil and/or criminal. The contents of this message need not necessarily reflect or endorse the views of Matrix ComSec Pvt Ltd on any subject matter. Any action taken or omitted on this message is not entirely at your risk and the originator of this message nor does Matrix ComSec Pvt Ltd take any responsibility or liability towards the same. If you are not the intended recipient, please notify us immediately and permanently delete the message.