

FREQUENTLY ASKED QUESTIONS

COSEC

What
When
Which
Where
How
Who
Why

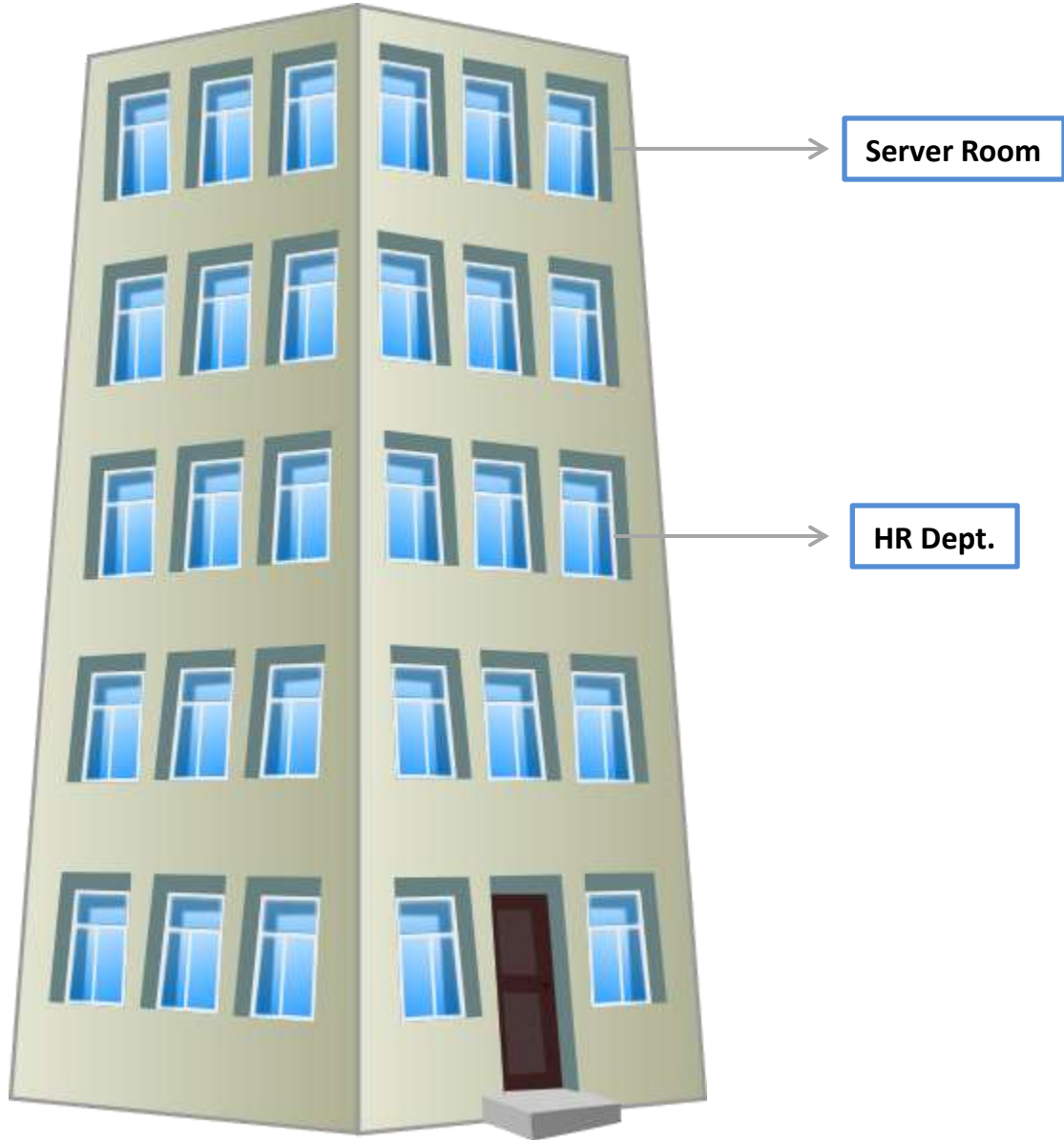


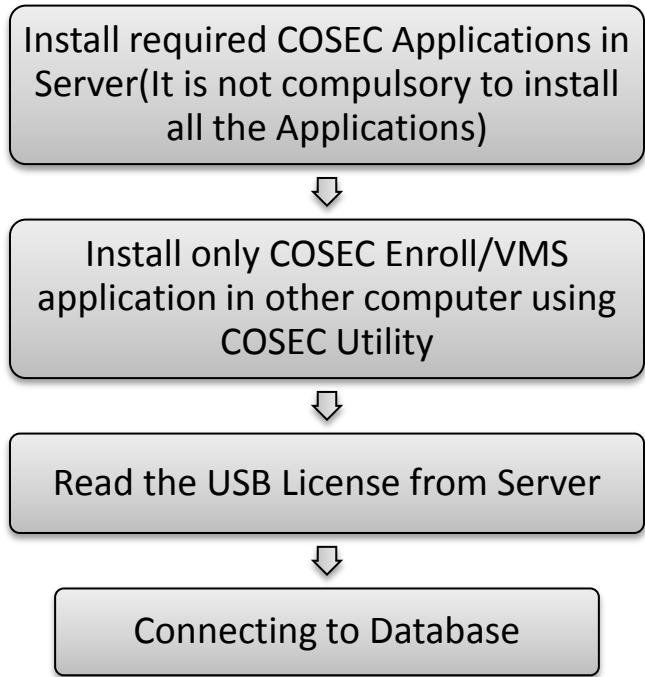
Date: 12th January 2015

Version: V1R1

Author: Ankit Joshi

COSEC Enroll/VMS Installation on other computer





COSEC Manual has really helped me out in the first 2 steps. Now all I need to do is to connect the Database.



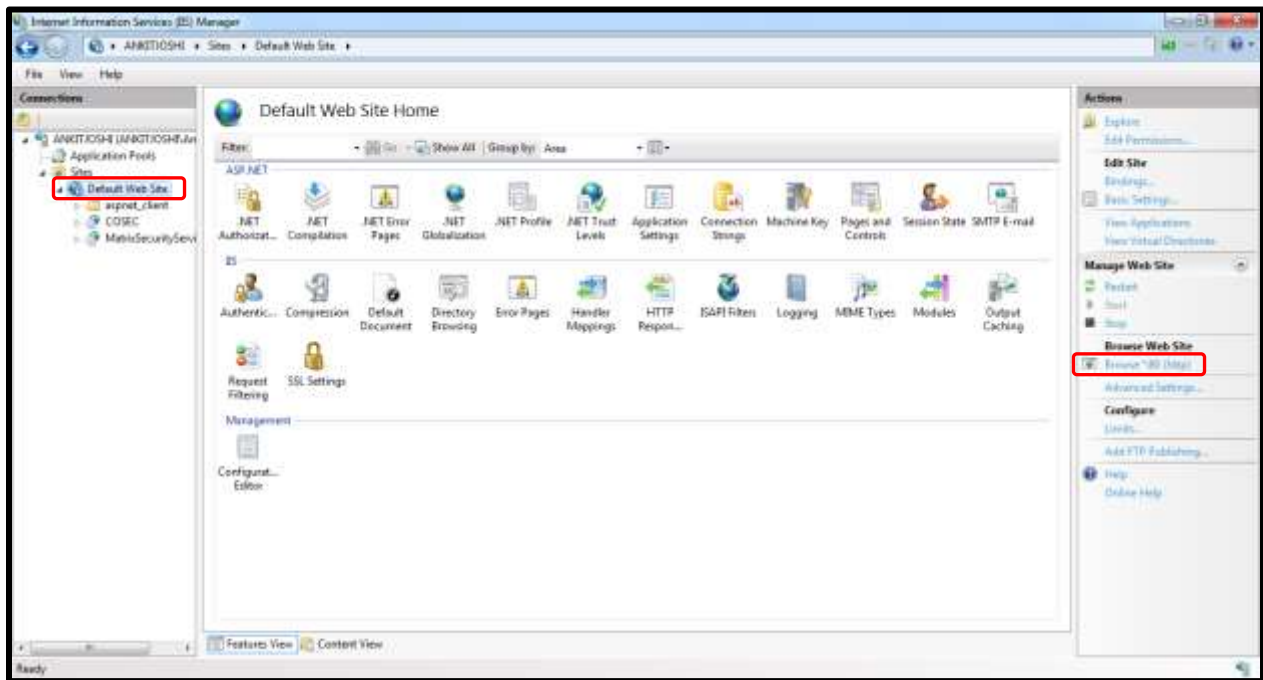
Now before going to HR,
first let me get the
Database settings of the
Server. Let me call the
Server admin.

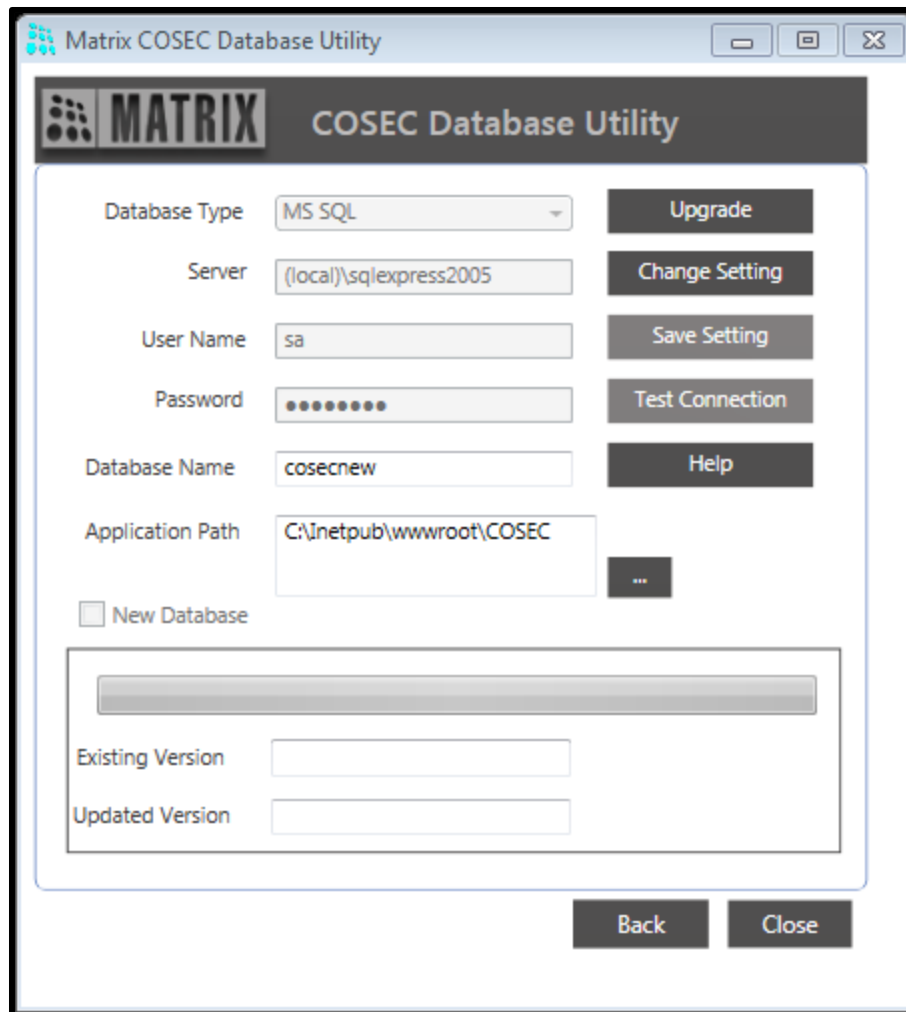


Hey Admin, Could you
please let me know some
of the Server Details.



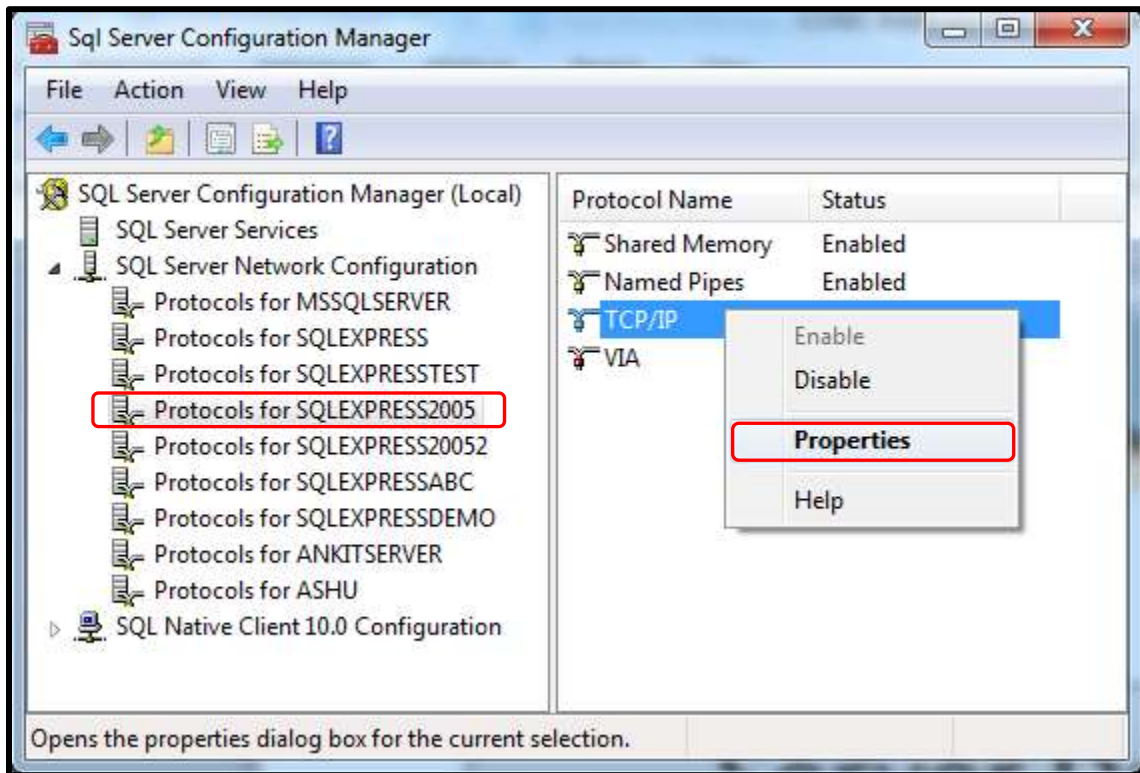
Server's IP Address is 192.168.43.129. Let me check the port in 'inetmgr' and database settings.

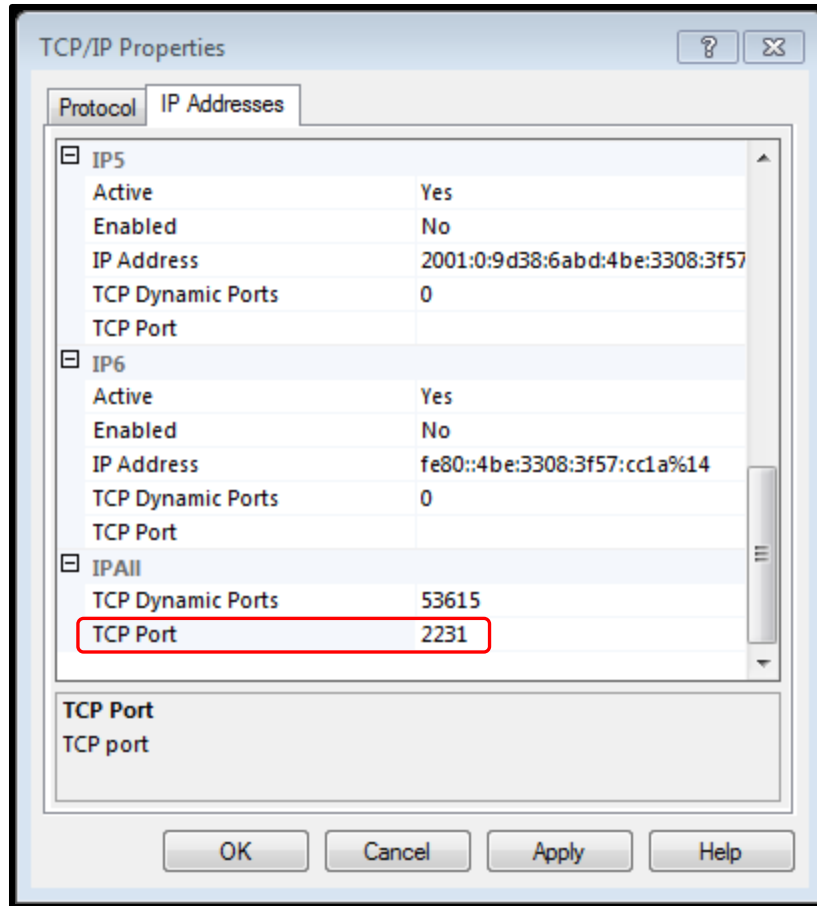




In order to know the TCP Port on which the instance is running I will have to open SQL Configuration manager.







Thanks a lot for the information. I have noted.



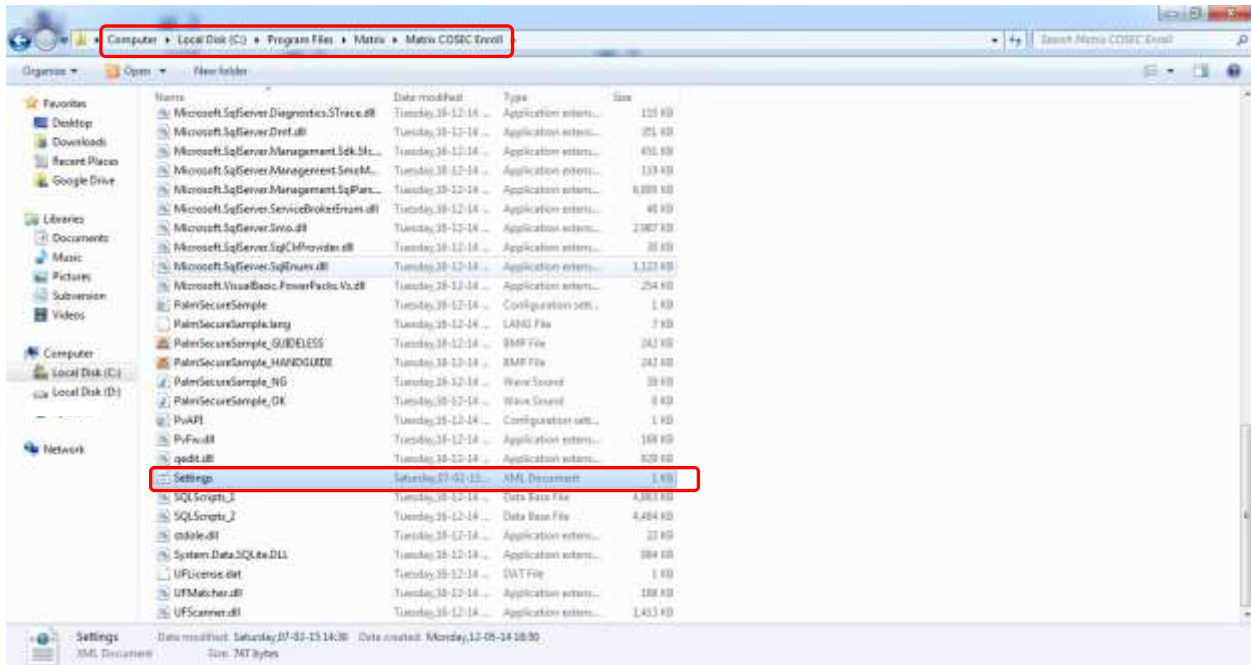
Server Details		
Server`s Local IP Address: 192.168.43.129 Default website running on port 80	Instance name: sqlexpress2005 Database name: cosecnew Username: sa Password: matrix_1	TCP Port of the Instance: 2231

Now let me configure
COSEC Enroll application in
HR`s computer.





I have installed COSEC Enroll using COSEC Installer. Now I will have to read the License from server.



Whenever HR will open COSEC Enroll then licenses will be read from "Settings.xml" file. So let me mention the path of dongle in this file.

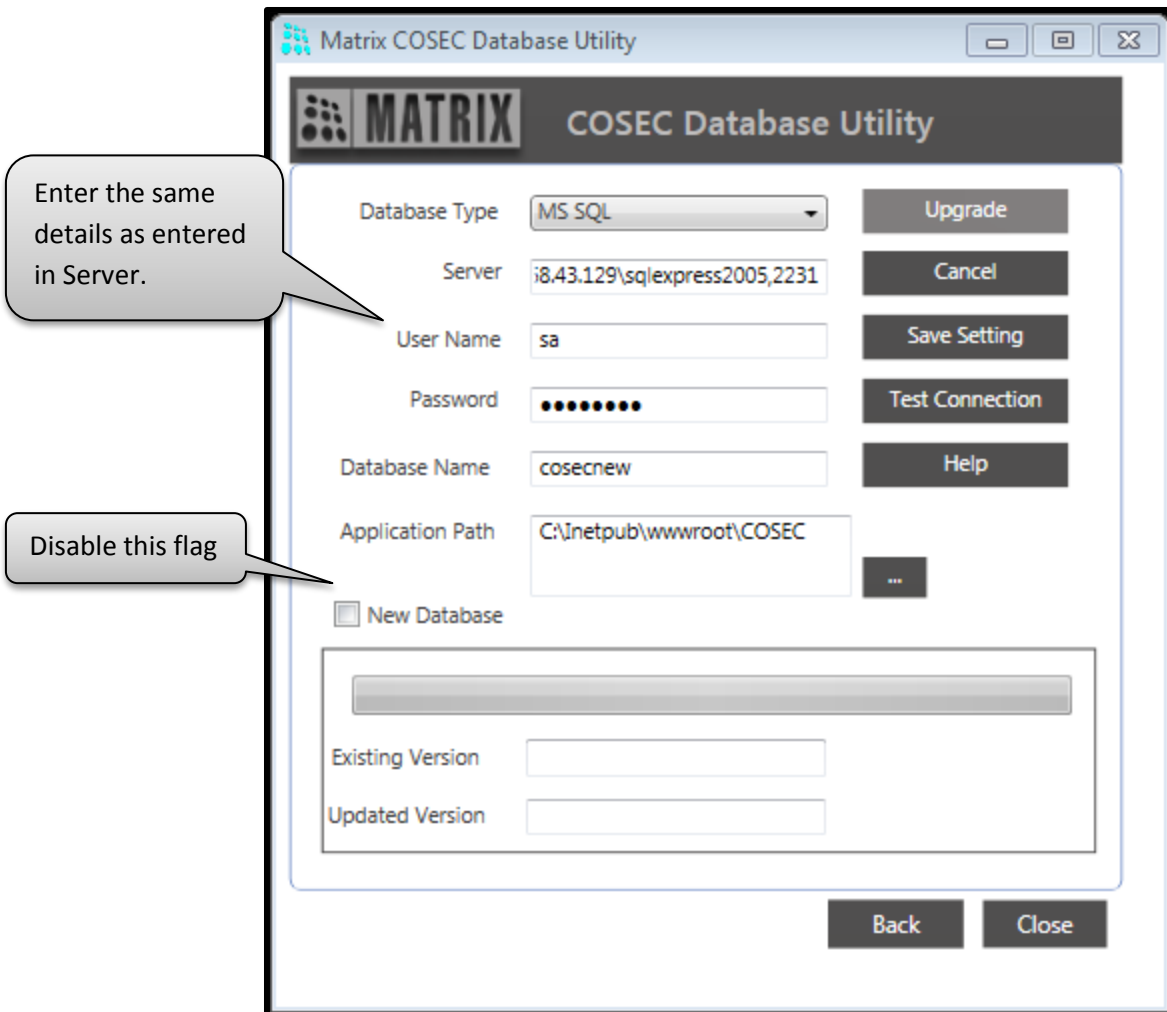


```
Settings - Notepad
File Edit Format View Help
<?xml version="1.0" standalone="yes"?>
<DocumentElement>
  <Settings>
    <key>SecurityDongleurl</key>
    <value>http://192.168.43.129/MatrixSecurityService/dongleSecurity.asmx</value>
  </Settings>
  <key>Cosec_url</key>
  <value>http://localhost/Cosec</value>
  </Settings>
  <key>ReaderPort</key>
  <value>COM5</value>
  </Settings>
  <key>ReaderType</key>
  <value>0</value>
  </Settings>
  <key>CaptureScaleSize</key>
  <value>100</value>
  </Settings>
  <key>Pass Template</key>
  <value>3</value>
  </Settings>
  <key>Printer</key>
  <value>\\192.168.51.210\Canon LBP2900</value>
  </Settings>
</DocumentElement>
```

Enter the Server's IP Address and port as "IP Address:Port" instead of Localhost if the License is to be read from other computer. Port is to be mentioned only if it is other than 80 and then save the file.

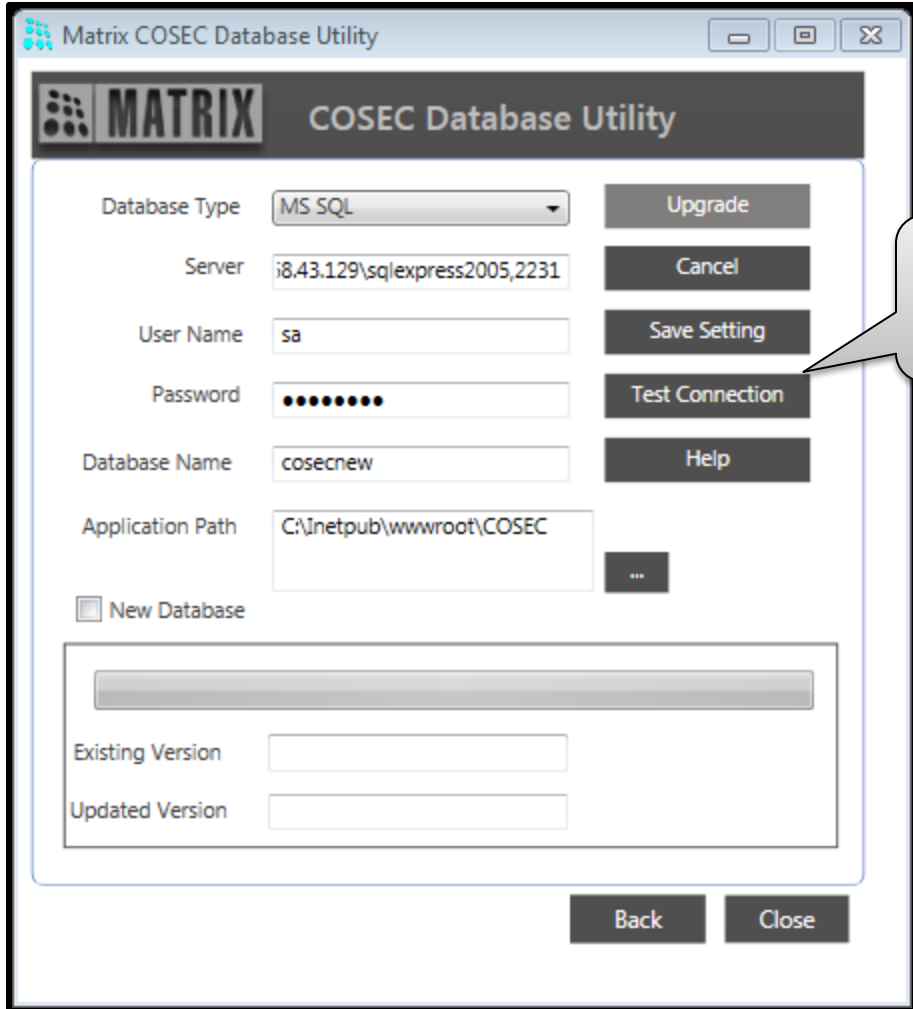
Now let me connect the Enroll application with the Server's Database. First of all I will open COSEC Database utility and enter the Database settings in it.



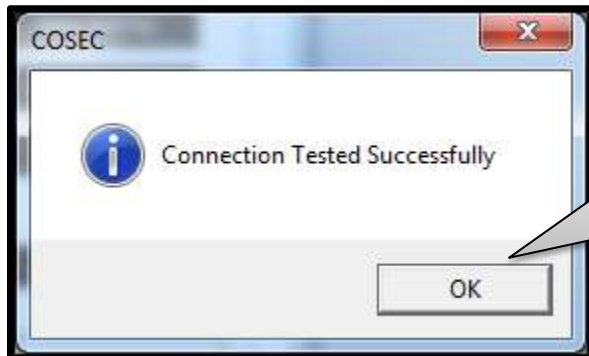


Enter the Server details in the following format as entered in the screenshot above:

IP ADDRESS OF SERVER\INSTANCE NAME,TCP PORT OF THE INSTANCE



Click here to test the database connection



System will acknowledge with a pop up.

Matrix COSEC Database Utility

MATRIX COSEC Database Utility

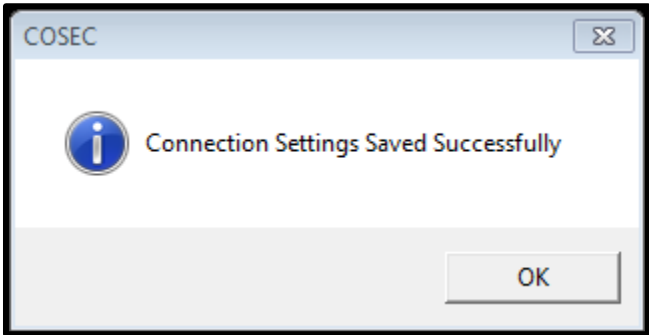
Database Type: MS SQL [v]
Server: i8.43.129\sqlexpress2005,2231
User Name: sa
Password: ●●●●●●
Database Name: cosecnew
Application Path: C:\inetpub\wwwroot\COSEC
[...]

New Database

Existing Version: []
Updated Version: []

Buttons: Upgrade, Cancel, Save Setting, Test Connection, Help, Back, Close

Save the settings in order to connect with the Server's Database



That's it. I am done. Its simply great. COSEC is really providing me resolution to all my difficulties.





Similarly if one has to install COSEC VMS Utility on other computer then the same process is to be followed.

For more information, contact
Matrix Technical Training Team
Training@MatrixComSec.com

Disclaimer: The information contained in this e-mail and/or attachment may contain confidential or privileged information. Unauthorized use, disclosure or copying is strictly prohibited and may constitute unlawful act and can possibly attract legal action, civil and/or criminal. The contents of this message need not necessarily reflect or endorse the views of Matrix ComSec Pvt Ltd on any subject matter. Any action taken or omitted on this message is not entirely at your risk and the originator of this message nor does Matrix ComSec Pvt Ltd take any responsibility or liability towards the same. If you are not the intended recipient, please notify us immediately and permanently delete the message.