

FREQUENTLY ASKED QUESTIONS

COSEC

What
When
Which
Where
How
Who
Why

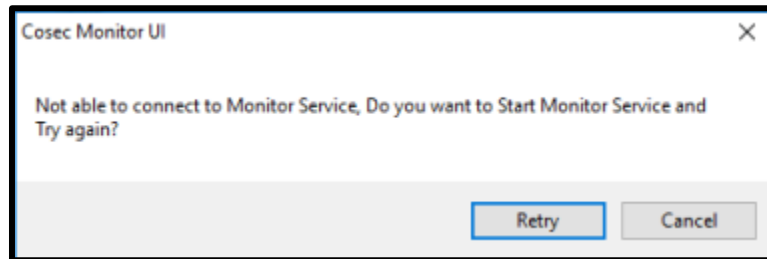


Date: 06th May, 2016

Version: V1R1

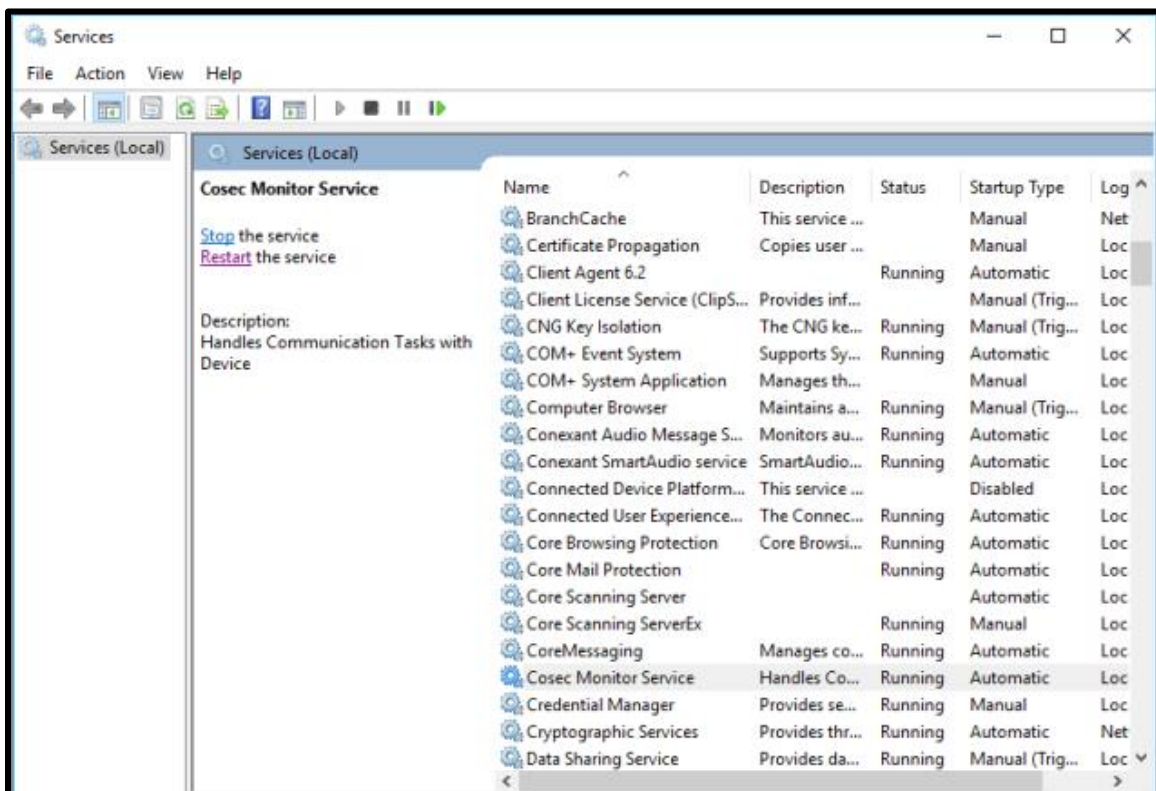
Author: Kint Mistry

How to connect to COSEC monitor service?

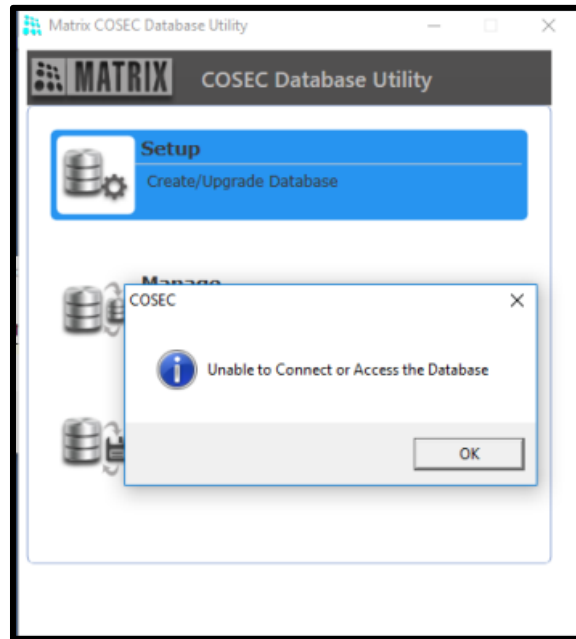


Follow below steps to resolve the problem:

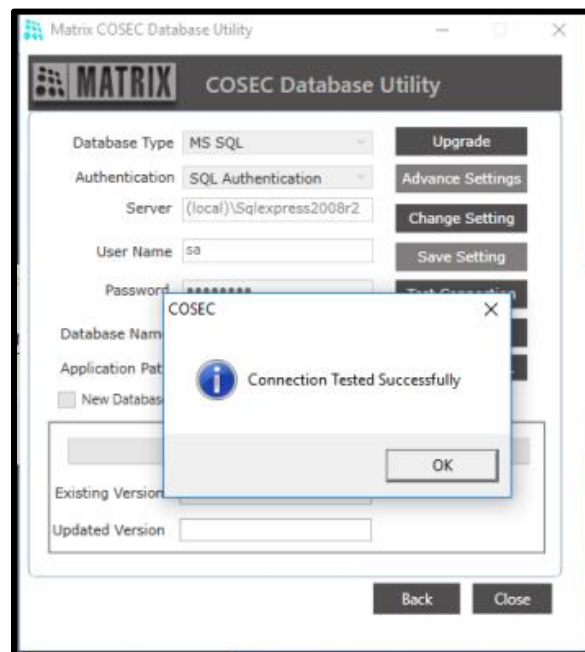
1. Go to services.msc and check whether COSEC Monitor Service is started or not.
2. If service is stopped than Start it. If it's already started than follow further steps.



3. Open COSEC Database Utility.
4. Check Database connection. If database settings are improper, error will appear again.



5. Enter Database settings and test the connection.



6. Restart COSEC Monitor Service once Database Connection is successful.

COSEC Monitor will now open without any error.

Disclaimer: The information contained in this e-mail and/or attachment may contain confidential or privileged information. Unauthorized use, disclosure or copying is strictly prohibited and may constitute unlawful act and can possibly attract legal action, civil and/or criminal. The contents of this message need not necessarily reflect or endorse the views of Matrix Comsec on any subject matter. Any action taken or omitted on this message is not entirely at your risk and the originator of this message nor does Matrix Comsec take any responsibility or liability towards the same. If you are not the intended recipient, please notify us immediately and permanently delete the message.