

FREQUENTLY ASKED QUESTIONS

COSEC

What
When
Which
Where
How
Who
Why



Date: 19th June 2015

Version: V1R1

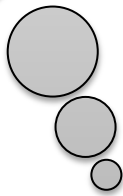
Author: Pankil Sheth

COSEC Integrate: Export to Oracle

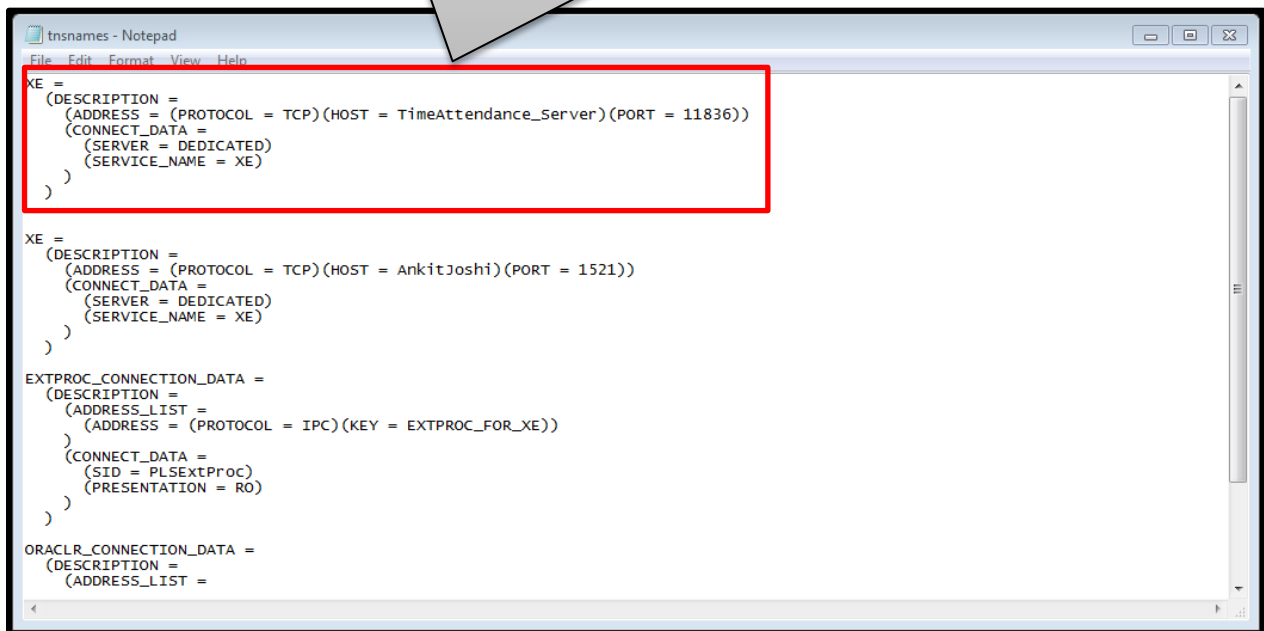
Yestrday, I had a word with payroll fellows. We can really save our time if we can send monthly attendance data to their payroll database. Just check how we can send monthly attendance data to Oracle.



Using COSEC Integrate we can transfer data from COSEC database to any other database. If the Oracle Server and COSEC Integrate are running on different computers , then Oracle Client has to be installed on the computer where COSEC Integrate is installed.



If Oracle server and COSEC Integrate applications are on different computers then specify the Host name of server computer and Port of Oracle as specified below in the computer where COSEC Integrate is to be installed. File can be found at C:\oraclexe\app\oracle\product\10.2.0\server\NETWORK\ADMIN. Name of file is tnsnames.ora. Open it in notepad.

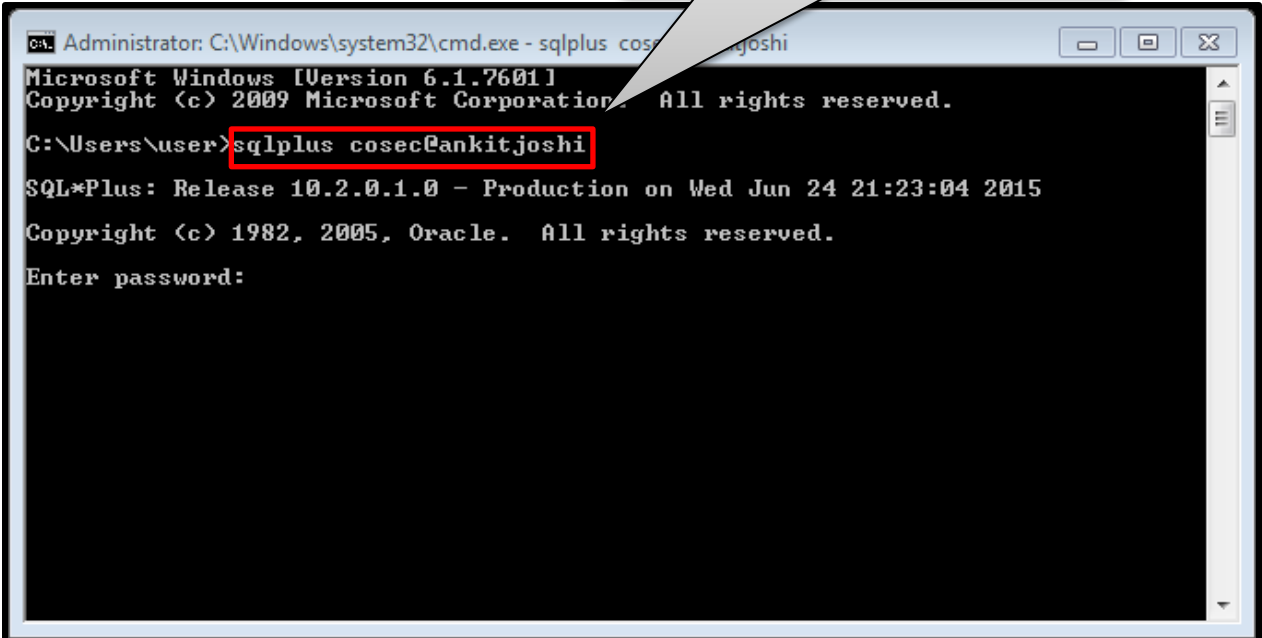


```
tnsnames - Notepad
File Edit Format View Help
XE =
  (DESCRIPTION =
    (ADDRESS = (PROTOCOL = TCP)(HOST = TimeAttendance_Server)(PORT = 11836))
    (CONNECT_DATA =
      (SERVER = DEDICATED)
      (SERVICE_NAME = XE)
    )
  )
XE =
  (DESCRIPTION =
    (ADDRESS = (PROTOCOL = TCP)(HOST = AnkitJoshi)(PORT = 1521))
    (CONNECT_DATA =
      (SERVER = DEDICATED)
      (SERVICE_NAME = XE)
    )
  )
EXTPROC_CONNECTION_DATA =
  (DESCRIPTION =
    (ADDRESS_LIST =
      (ADDRESS = (PROTOCOL = IPC)(KEY = EXTPROC_FOR_XE))
    )
    (CONNECT_DATA =
      (SID = PLSEXTProc)
      (PRESENTATION = RO)
    )
  )
ORACLR_CONNECTION_DATA =
  (DESCRIPTION =
    (ADDRESS_LIST =
```

Now let me check the connectivity to Oracle database.



In command prompt type sqlplus
"Username"@"Hostname of Server"



```
Administrator: C:\Windows\system32\cmd.exe - sqlplus cosec@ankitjoshi
Microsoft Windows [Version 6.1.7601]
Copyright (c) 2009 Microsoft Corporation. All rights reserved.

C:\Users\user>sqlplus cosec@ankitjoshi
SQL*Plus: Release 10.2.0.1.0 - Production on Wed Jun 24 21:23:04 2015
Copyright (c) 1982, 2005, Oracle. All rights reserved.

Enter password:
```

Specify the password for Oracle User. Password will not be displayed. Just enter the password and hit Enter.

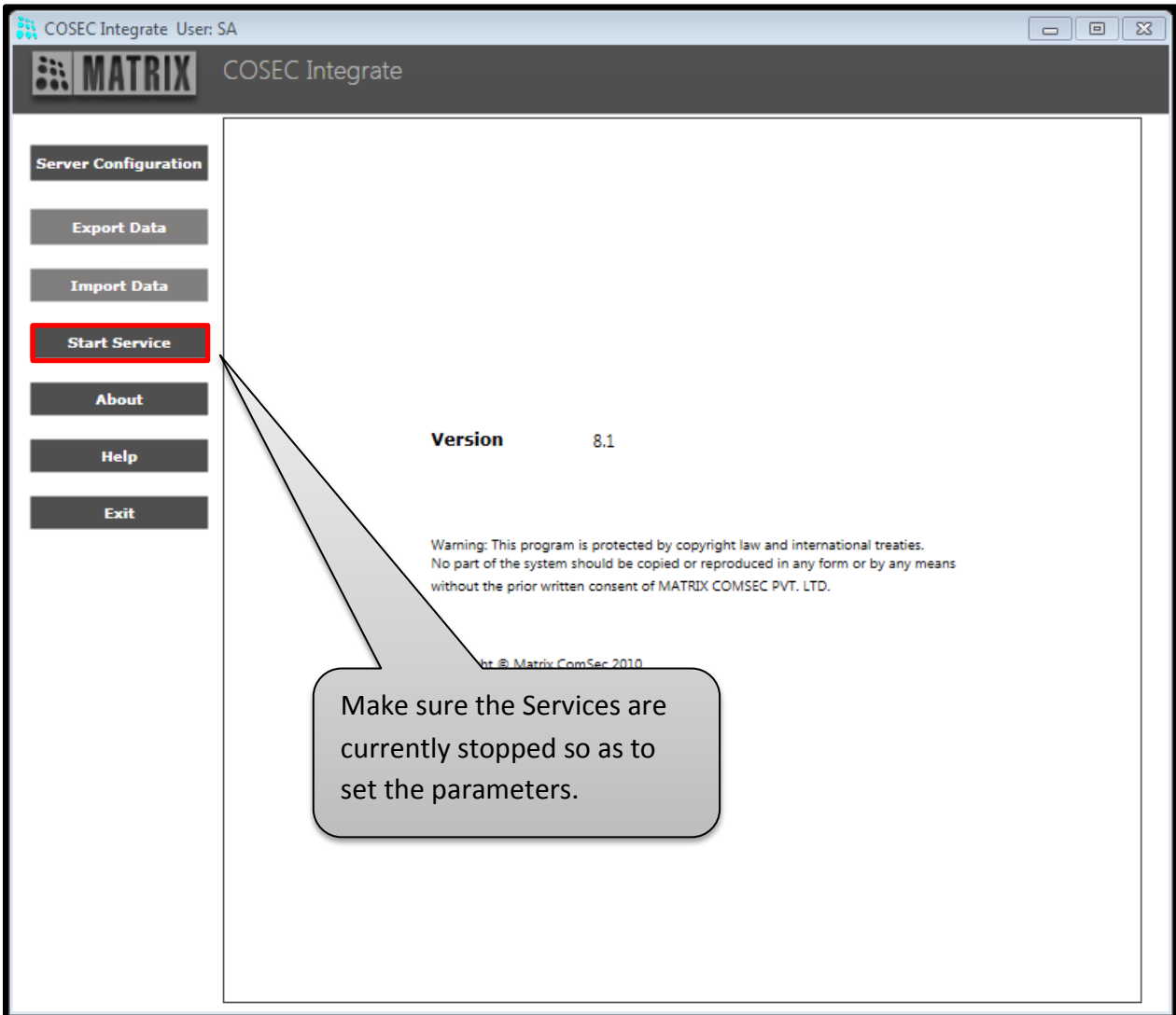
```
Administrator: C:\Windows\system32\cmd.exe - c:\Users\user\Documents\cosec@ankitjoshi
Microsoft Windows [Version 6.0.6002.18005]
Copyright (c) 2009 Microsoft Corporation. All rights reserved.

C:\Users\user>sqlplus cosec@ankitjoshi

SQL*Plus: Release 10.2.0.1.0 - Production on Wed Jun 24 21:23:04 2015
Copyright (c) 1982, 2005, Oracle. All rights reserved.

Enter password:
Connected to:
Oracle Database 10g Express Edition Release 10.2.0.1.0 - Production
SQL>
```

Success! We are able to connect to Oracle Database.
Now open COSEC Integrate Application.





Server Configuration

Export Data

Import Data

Start Service

About

Help

Exit

Go to Server configurations to specify the source and destination database details.

Version 8.1

Warning: This program is protected by copyright law and international treaties. No part of the system should be copied or reproduced in any form or by any means without the prior written consent of MATRIX COMSEC PVT. LTD.

Copyright © Matrix ComSec 2010
All Rights Reserved.

Select the desired Integration Mode

COSEC Integrate User: SA

MATRIX COSEC Integrate

Server Configuration

Export Data

Import Data

Start Service

About

Help

Exit

Integration Mode **Export to Oracle Server**

COSEC Web Server

Web URL

User Name

Password

Test Connection

Oracle

Server

User Name

Password

Test Connection

Edit **Save** **Cancel**

COSEC Integrate User: SA

MATRIX COSEC Integrate

Server Configuration

Export Data

Import Data

Start Service

About

Help

Exit

Integration Mode: Export to Oracle Server

COSEC Web Server

Web URL:

User Name:

Password:

Test Connection

Oracle

Server:

User Name:

Password:

Test Connection

Edit **Save** **Cancel**

Click on Edit button to specify the database settings.

COSEC Integrate User: SA

MATRIX COSEC Integrate

COSEC Web Server Connection Tested Successfully

Integration Mode

COSEC Web Server

Web URL

User Name

Password

Test Connection

Oracle

Server

User Name

Password

Test Connection

Edit Save Cancel

Specify COSEC Web Server details and click on Test Connection.

COSEC Integrate User: SA

MATRIX COSEC Integrate

Oracle Connection Tested Successfully

Integration Mode:

COSEC Web Server

Web URL:

User Name:

Password:

Oracle

Server:

User Name:

Password:

Specify Oracle Server details and click on Test Connection.

COSEC Integrate User: SA

MATRIX COSEC Integrate

Server Configuration

Export Data

Import Data

Start Service

About

Help

Exit

Saved Successfully

Integration Mode:

COSEC Web Server

Web URL:

User Name:

Password:

Test Connection

Oracle

Server:

User Name:

Password:

Test Connection

Edit **Save** **Cancel**

Save the database settings done so far.



Go to "Export Data"

Server Configuration

Export Data

Import Data

Start Service

About

Help

Exit

Export

Database

Source Data Template

Table-Field Mapping

Destination Table

Source Field | | |

Destination Field | | |

Add

| Source Field | Data Type | Length | Decimal | Destination Field | Data Type | Length | Decimal | Clear |
|--------------|-----------|--------|---------|-------------------|-----------|--------|---------|-------|
|--------------|-----------|--------|---------|-------------------|-----------|--------|---------|-------|

Schedule

Active

Enable Filter

Schedule

Every Day of the Month

Run time (HH:MM)

Retry Count

Retry Interval Hour

Attendance Period Day of To Day of

Specify the type of data which is to be exported from COSEC Database. Currently we need the monthly details from COSEC DB.

COSEC Integrate User: SA

MATRIX COSEC Integrate

Server Configuration

- Export Data
- Import Data
- Start Service
- About
- Help
- Exit

Export

Database: Oracle Server

Source Data Template: API_Template_Monthly

Table-Field Mapping

Destination Table: SALARY_DATA

Source Field: ABDAYS | NUMERIC | 4 | 1

Destination Field: EMP_ID | VarChar | 40 | 0

Add

| Source Field | Data Type | Length | Decimal | Destination Field | Data Type | Length | Decimal | Year |
|--------------|-----------|--------|---------|-------------------|-----------|--------|---------|------|
|--------------|-----------|--------|---------|-------------------|-----------|--------|---------|------|

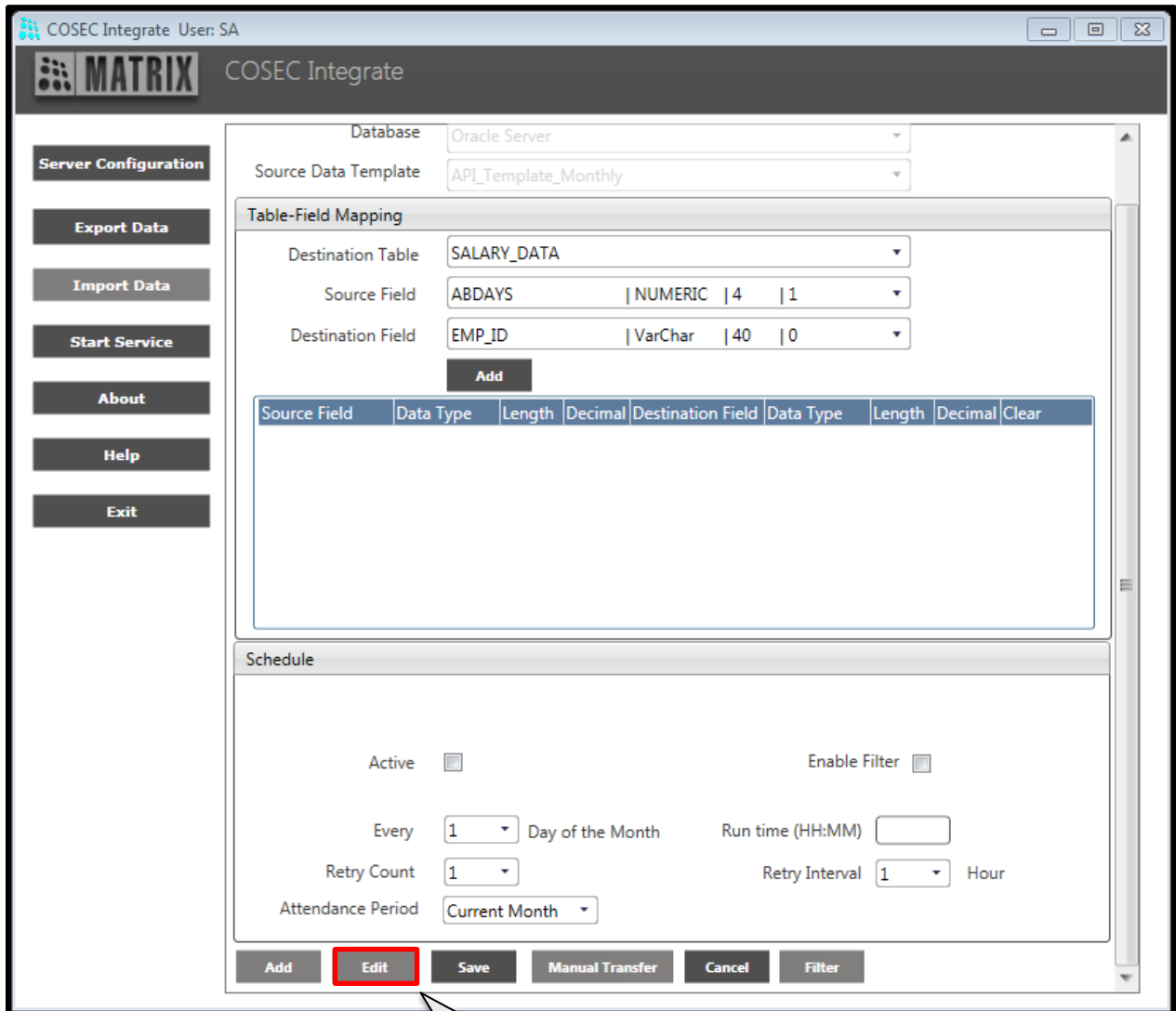
Schedule

Active Enable Filter

Every 1 Day of the Month Run time (HH:MM)

Retry Count 1 Retry Interval 1 Hour

Attendance Period Current Month



Click on Edit button to start configuring the Export.

Select the appropriate Destination table to which the data is to be exported. Add the required pair of Source and Destination fields.

COSEC Integrate User: SA

MATRIX COSEC Integrate

Database: Oracle Ser...
Source Data Template: API_Temp...Monthly

Table-Field Mapping

Destination Table: SALARY_DATA
Source Field: USERID | VARCHAR | 10 | 0
Destination Field: EMP_ID | VarChar | 40 | 0

Add

| Source Field | Data Type | Length | Decimal | Destination Field | Data Type | Length | Decimal | Clear |
|--------------|-----------|--------|---------|-------------------|-----------|--------|---------|-------|
|--------------|-----------|--------|---------|-------------------|-----------|--------|---------|-------|

Schedule

Active Enable Filter

Every 1 Day of the Month Run time (HH:MM)

Retry Count 1 Retry Interval 1 Hour

Attendance Period Current Month

Add Edit Save Manual Transfer Cancel Filter

Source and Destination data types should match. Also, the Length of Destination Field should be more than or at least equal to Source Field.

The screenshot shows the COSEC Integrate application window. The interface includes a sidebar with navigation buttons: Server Configuration, Export Data, Import Data, Start Service, About, Help, and Exit. The main area is titled 'Table-Field Mapping' and is configured for an Oracle Server database using the API_Template_N source data template. The destination table is SALARY_DATA. The current mapping shows the source field PLDAYS (Numeric, length 4, decimal 1) being mapped to the destination field PAIDLEAVES (Number, length 4, decimal 1). Below this, a table lists several other mappings, with red boxes highlighting the 'Data Type' and 'Length' columns for each row to illustrate mismatches.

| Source Field | Data Type | Length | Decimal | Destination Field | Data Type | Length | Decimal | Clear |
|--------------|-----------|--------|---------|-------------------|-----------|--------|---------|-------|
| USERNAME | VARCHAR | 45 | 0 | EMP_NAME | VarChar | 50 | 0 | Clear |
| PYEAR | NUMERIC | 4 | 0 | YEAR | Number | 4 | 0 | Clear |
| PMONTH | NUMERIC | 2 | 0 | MONTH | Number | 4 | 0 | Clear |
| PRDAYS | NUMERIC | 4 | 1 | PRESENTS | Number | 4 | 1 | Clear |
| PRDAYS | NUMERIC | 4 | 1 | PRESENTS | Number | 4 | 1 | Clear |

The 'Schedule' section at the bottom is active, with 'Enable Filter' disabled. The schedule is set to run every 'Last' day of the month at 07:00, with a retry count of 5 and a 1-hour retry interval. The attendance period is set to 'Current Month'. Buttons for 'Add', 'Edit', 'Save', 'Manual Transfer', 'Cancel', and 'Filter' are located at the bottom of the window.

Source and Destination data type should match. Also, the Length of Destination Field should be more than or at least equal to the Source Field.



COSEC Integrate User: SA

MATRIX COSEC Integrate

Database: Oracle Server
Source Data Template: API_Template_Monthly

Table-Field Mapping

Destination Table: SALARY_DATA
Source Field: PLDAYS | NUMERIC | 4 | 1
Destination Field: PAIDLEAVES | Number | 4 | 1

Add

| Source Field | Data Type | Length | Decimal | Destination Field | Data Type | Length | Decimal | Clear |
|--------------|-----------|--------|---------|-------------------|-----------|--------|---------|-------|
| USERNAME | VARCHAR | 45 | 0 | EMP_NAME | VarChar | 50 | 0 | Clear |
| PYEAR | NUMERIC | 4 | 0 | YEAR | Number | 4 | 0 | Clear |
| PMONTH | NUMERIC | 2 | 0 | MONTH | Number | 4 | 0 | Clear |
| PRDAYS | NUMERIC | 4 | 1 | PRESENTS | Number | 4 | 1 | Clear |
| APRDAYS | NUMERIC | 4 | 1 | ABSENTS | Number | 4 | 1 | Clear |

Schedule

Active Enable Filter

Every: Last Day of the Month Run time (HH:MM): 07:00

Retry Count: 5 Retry Interval: 1 Hour

Attendance Period: Current Month

Add Edit **Save** Manual Transfer Cancel Filter

Mention the Schedule parameters as required and save the settings.

COSEC Integrate User: SA

MATRIX COSEC Integrate

Database: Oracle Server
Source Data Template: API_Template_Monthly

Table-Field Mapping

Destination Table: SALARY_DATA
Source Field: PLDAYS | NUMERIC | 4 | 1
Destination Field: PAIDLEAVES | Number | 4 | 1

Add

| Source Field | Data Type | Length | Decimal | Destination Field | Data Type | Length | Decimal | Action |
|--------------|-----------|--------|---------|-------------------|-----------|--------|---------|--------|
| USERNAME | VARCHAR | 45 | 0 | EMP_NAME | VarChar | 50 | 0 | Clear |
| PYEAR | NUMERIC | 4 | 0 | YEAR | Number | 4 | 0 | Clear |
| PMONTH | NUMERIC | 2 | 0 | MONTH | Number | 4 | 0 | Clear |
| PRDAYS | NUMERIC | 4 | 1 | PRESENTS | Number | 4 | 1 | Clear |
| APDAYS | NUMERIC | 4 | 1 | ABSENTS | Number | 4 | 1 | Clear |

Schedule

Active Enable Filter

Every: Last Day of the Month Run time (HH:MM): 07:00

Retry Count: 5 Retry Interval: 1 Hour

Attendance Period: Current Month

Add Edit Save **Manual Transfer** Cancel Filter


We can manually transfer the data as per the field mapping done so far.

Manual Transfer to Oracle

Month

Year

COSEC Integrate

 Process Completed Manual: Total Records:8, Succeed:8

User: COSEC

Home > Object Browser

Tables

SALARY_DATA

SALARY_DATA

Create

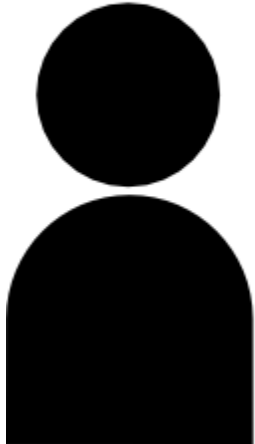
Table Data Indexes Model Constraints Grants Statistics UI Defaults Triggers Dependencies SQL

Query Count Rows Insert Row

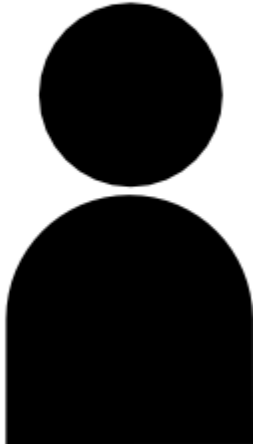
| EDIT | EMP_ID | EMP_NAME | YEAR | MONTH | PRESENTS | ABSENTS | WEEKOFFS | PAIDLEAVES |
|------|--------|----------|------|-------|----------|---------|----------|------------|
| | 11213 | Ted | 2015 | 5 | 22 | 2 | 4 | 0 |
| | 11567 | George | 2015 | 5 | 20 | 4 | 4 | 0 |
| | 11763 | Elliot | 2015 | 5 | 22 | 2 | 4 | 0 |
| | 11764 | John | 2015 | 5 | 20 | 4 | 4 | 0 |
| | 12 | Nishit | 2015 | 5 | 24 | 2 | 4 | 0 |
| | 8898 | TestUser | 2015 | 5 | 20 | 4 | 4 | 0 |
| | AJ | ankit | 2015 | 5 | 22 | 2 | 4 | 0 |
| | PS | Pankaj | 2015 | 5 | 20 | 4 | 4 | 0 |

row(s) 1 - 8 of 8

Download



I have completed the configuration for transferring data from COSEC Database to Oracle Database.



We have really made a wise decision in choosing Matrix COSEC.

For more information, contact
Matrix Technical Training Team
Training@MatrixComSec.com

Disclaimer: The information contained in this e-mail and/or attachment may contain confidential or privileged information. Unauthorized use, disclosure or copying is strictly prohibited and may constitute unlawful act and can possibly attract legal action, civil and/or criminal. The contents of this message need not necessarily reflect or endorse the views of Matrix Comsec on any subject matter. Any action taken or omitted on this message is not entirely at your risk and the originator of this message nor does Matrix Comsec take any responsibility or liability towards the same. If you are not the intended recipient, please notify us immediately and permanently delete the message.