

FREQUENTLY ASKED QUESTIONS

SATATYA DVR/NVR/HVR

What
When
Which
Where
How
Who
Why



Date: 5th February 2015

Version: V1R1

Author: Ashutosh Sharma

Camera Wise Recording/Backup Retention



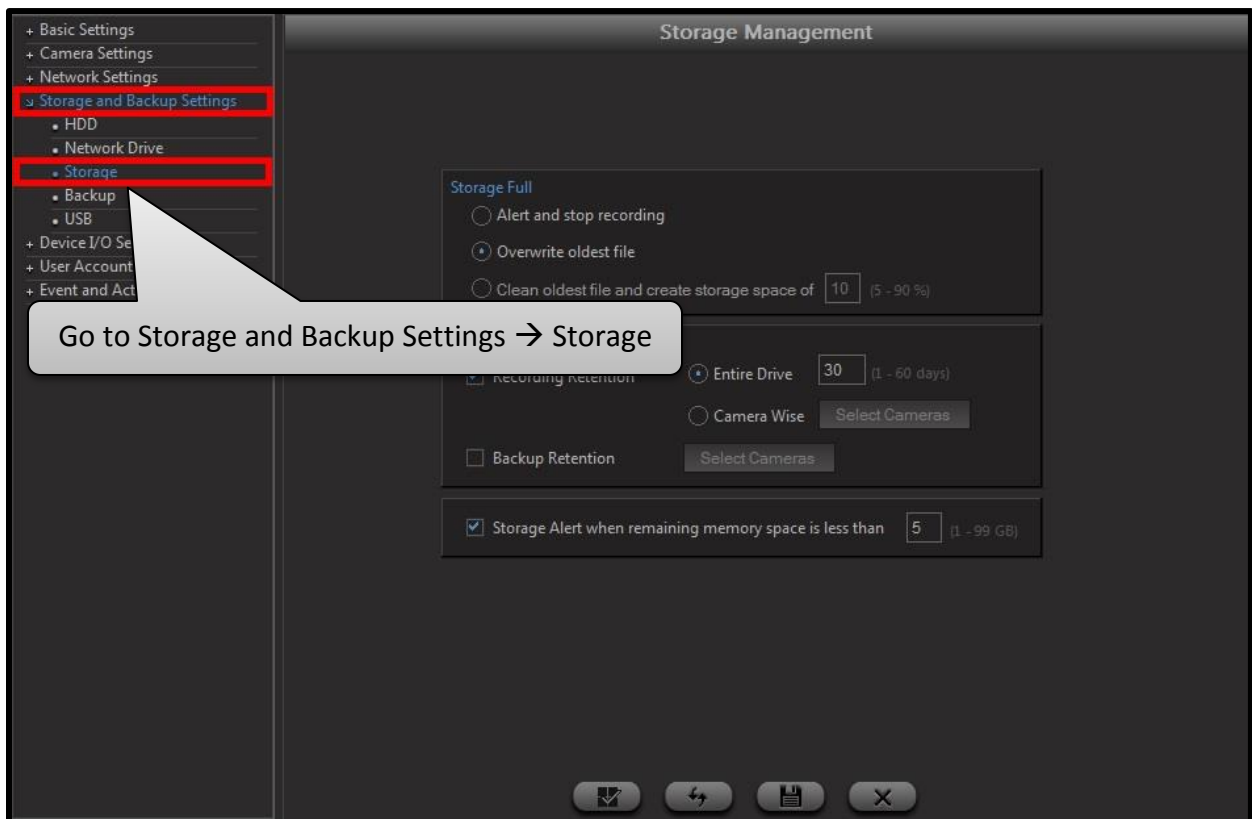
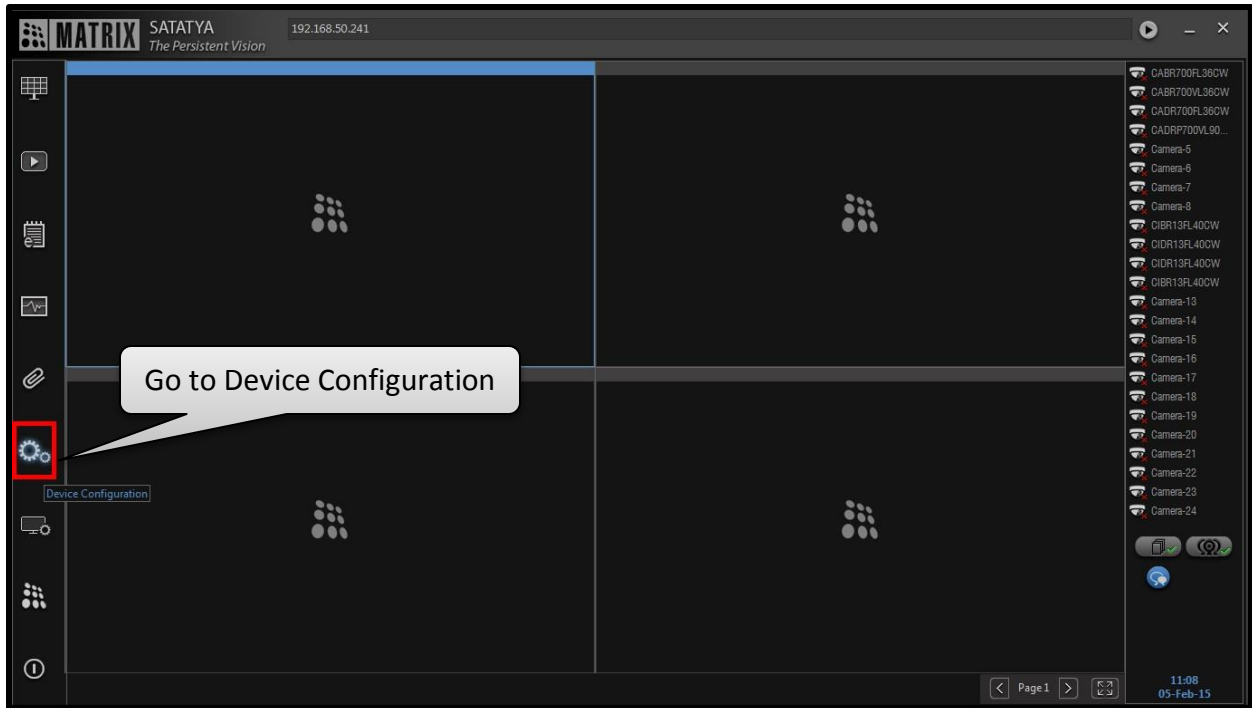
Consider a scenario where the admin of the company wants to retain the recorded files of Main Gate cameras for 30 days and of Guest Room cameras for 15 days.

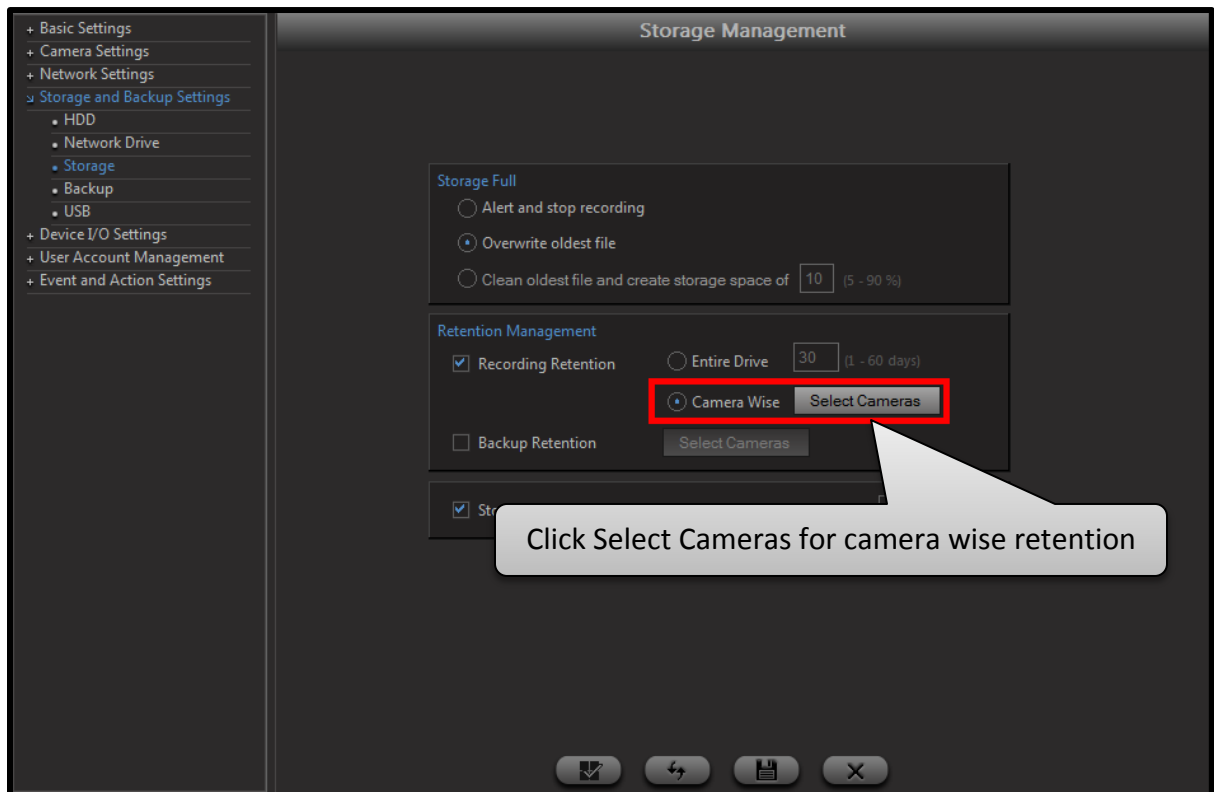
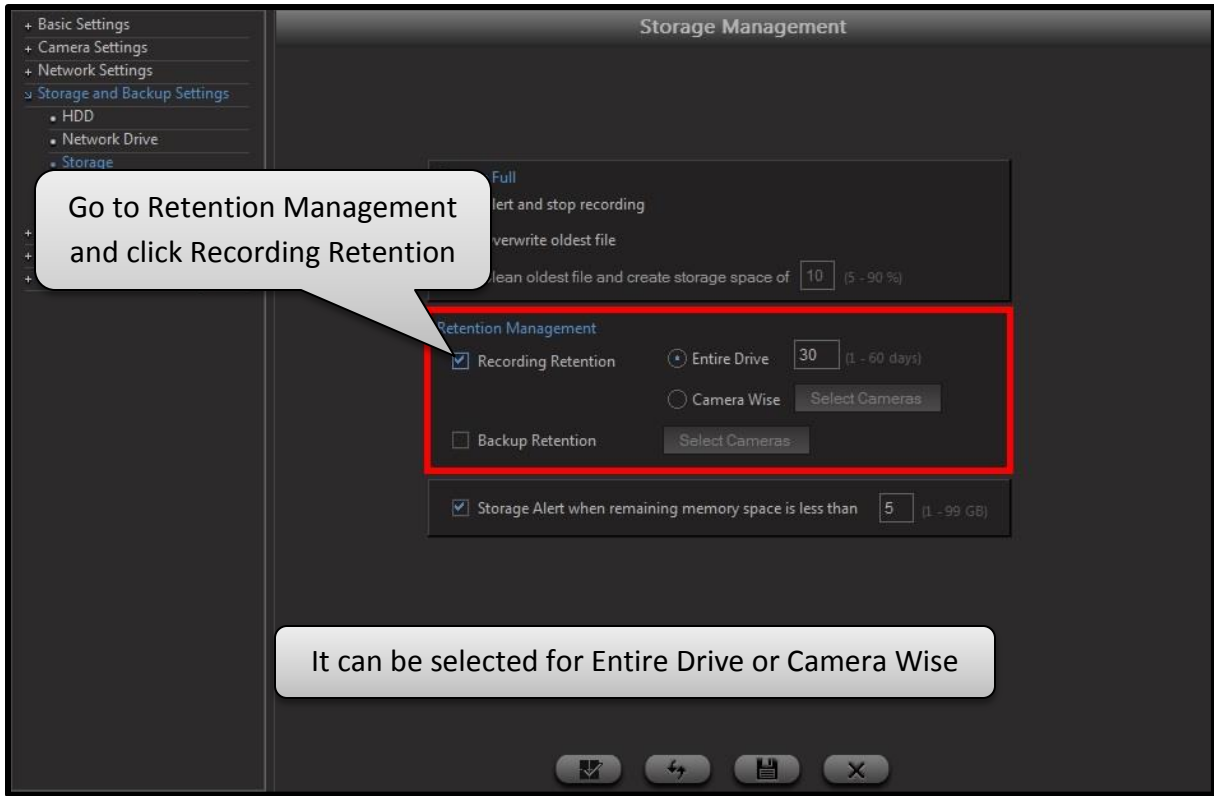
Camera Wise Recording Retention option will help in doing this. The recorded files can be retained over Local/Network Drive



Camera Wise Backup Retention option is also possible. The files taken in backup can be retained over Local/Network/FTP Drive







Camera Name	Retain Data of (in days) (1 - 999)	Camera Name	Retain Data of (in days) (1 - 999)	Camera Name	Retain Data of (in days) (1 - 999)
1 : CABR700FL36CW	5	9 : CIBR13FL40CW	10	17 : Camera-17	10
2 : CABR700VL36CW	30	10 : CIDR13FL40CW	10	18 : Camera-18	10
3 : CADR700FL36CW	15	11 : CIDR13FL40CW	10	19 : Camera-19	10
4 : CADRP700VL90SW	30	12 : CIBR13FL40CW	10	20 : Camera-20	10
5 : Camera-5	10	13 : Camera-13	10	21 : Camera-21	10
6 : Camera-6	10	14 : Camera-14	10	22 : Camera-22	10
7 : Camera-7	10	15 : Camera-15	10	23 : Camera-23	10
8 : Camera-8					10

Specify the Retention data for individual cameras in days

- + Basic Settings
- + Camera Settings
- + Network Settings
- Storage and Backup Settings
 - HDD
 - Network Drive
 - Storage
 - Backup
 - USB
- + Device I/O Settings
- + User Account Management
- + Event and Action Settings

Storage Management

Storage Full

Alert and stop recording

Overwrite oldest file

Clean oldest file and create storage space of (5 - 90 %)

Retention Management

Recording Retention Entire Drive (1 - 60 days)

Camera Wise

Backup Retention

Storage Alert when remaining storage space is less than (1 - 99 GB)

To enable Backup Retention click the check box and click select cameras

Camera Name	Retain Data of (in days) (1 - 999)	Camera Name	Retain Data of (in days) (1 - 999)	Camera Name	Retain Data of (in days) (1 - 999)
1 : CABR700FL36CW	10	9 : CIBR13FL40CW	10	17 : Camera-17	10
2 : CABR700VL36CW	10	10 : CIDR13FL40CW	10	18 : Camera-18	10
3 : CADR700FL36CW	10	11 : CIDR13FL40CW	10	19 : Camera-19	10
4 : CADRP700VL90SW	10	12 : CIBR13FL40CW	10	20 : Camera-20	10
5 : Camera-5	10	13 : Camera-13	10	21 : Camera-21	10
6 : Camera-6	10	14 : Camera-14	10	22 : Camera-22	10
7 : Camera-7	10	15 : Camera-15	10	23 : Camera-23	10
8 : Camera-8	10	16 : Camera-16	10	24 : Camera-24	10

Specify the Retention data for individual cameras in days

✓ ✕

- + Basic Settings
- + Camera Settings
- + Network Settings
- Storage and Backup Settings
 - HDD
 - Network Drive
 - Storage
 - Backup
 - USB
- + Device I/O Settings
- + User Account Management
- + Event and Action Settings

Storage Management

Storage Full

Alert and stop recording

Overwrite oldest file

Clean oldest file and create storage space of (5 - 90 %)

Retention Management

Recording Retention Entire Drive (1 - 60 days)

Camera Wise

Backup Retention

Storage Alert when remaining memory space is less than (1 - 99 GB)

Click Save to save the configuration

⏪ ⏩ 💾 ✕

For more information, contact
Matrix Technical Training Team
Training@MatrixComSec.com

Disclaimer: The information contained in this e-mail and/or attachment may contain confidential or privileged information. Unauthorized use, disclosure or copying is strictly prohibited and may constitute unlawful act and can possibly attract legal action, civil and/or criminal. The contents of this message need not necessarily reflect or endorse the views of Matrix ComSec Pvt Ltd on any subject matter. Any action taken or omitted on this message is not entirely at your risk and the originator of this message nor does Matrix ComSec Pvt Ltd take any responsibility or liability towards the same. If you are not the intended recipient, please notify us immediately and permanently delete the message.