

# FREQUENTLY ASKED QUESTIONS

SATATYA NVR

What  
When  
Which  
Where  
How  
Who  
Why

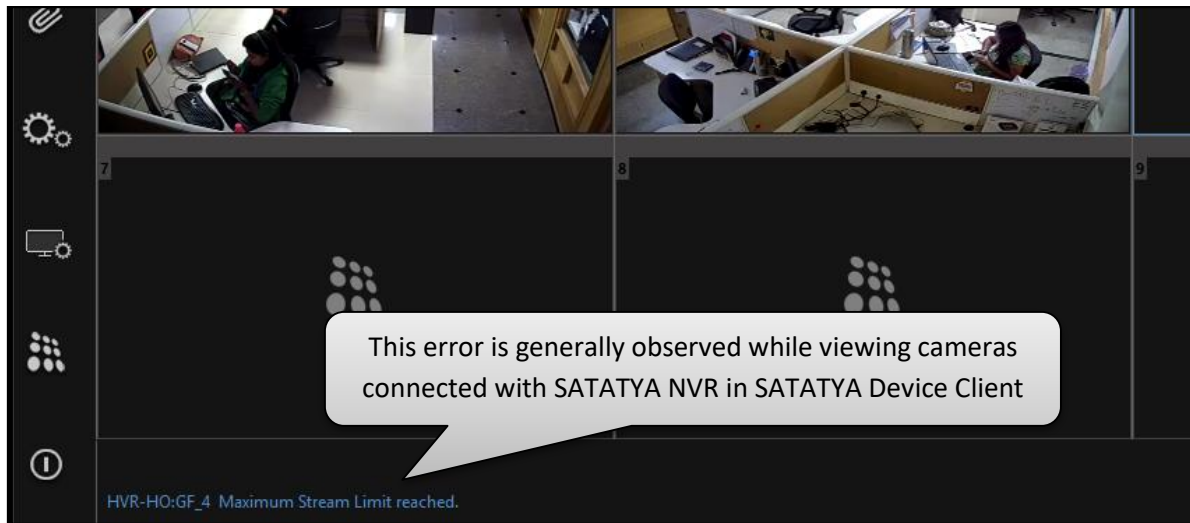


**Date:** 1<sup>st</sup> February, 2016

**Version:** V1R1

**Author:** Ashutosh Sharma

## How to solve the error 'Maximum Stream Limit Reached' in SATATYA Devices?



Stream Limit is defined as the limit of a SATATYA device to provide cameras' live streams.

Stream Limit of any SATATYA device can be calculated by multiplying the total number of channels of SATATYA device by 3.

So, the Stream Limit of SATATYA NVR24P will be  $24 \times 3 = 72$ .

Stream Limit of SATATYA NVR64P will be  $64 \times 3 = 192$ , and so on.

This implies that SATATYA NVR24P can stream out maximum of 72 streams. If the stream goes above 72, the error will be displayed.

Let's understand this with an example.

Consider a scenario where a SATATYA NVR24P is connected in the network. Assume that all users are viewing the cameras connected with the device on the network itself. The users are viewing certain number of cameras simultaneously on their respective PCs as shown in the second column of the table below:

User	No. of Live View of Cameras going on Simultaneously	Remaining Stream Limit of SATATYA NVR24P
1	24	$72-24 = 48$
2	8	$48-8 = 40$
3	16	$40-16 = 24$
4	5	$24-5 = 19$
5	18	$19-18 = 1$

Now, as the remaining Stream Limit, after the 5<sup>th</sup> user logs in, is only 1, a 6<sup>th</sup> user can log in and view only one camera in the PC. If 6<sup>th</sup> user tries to open another camera, user will get the error 'Maximum Stream Limit Reached'.

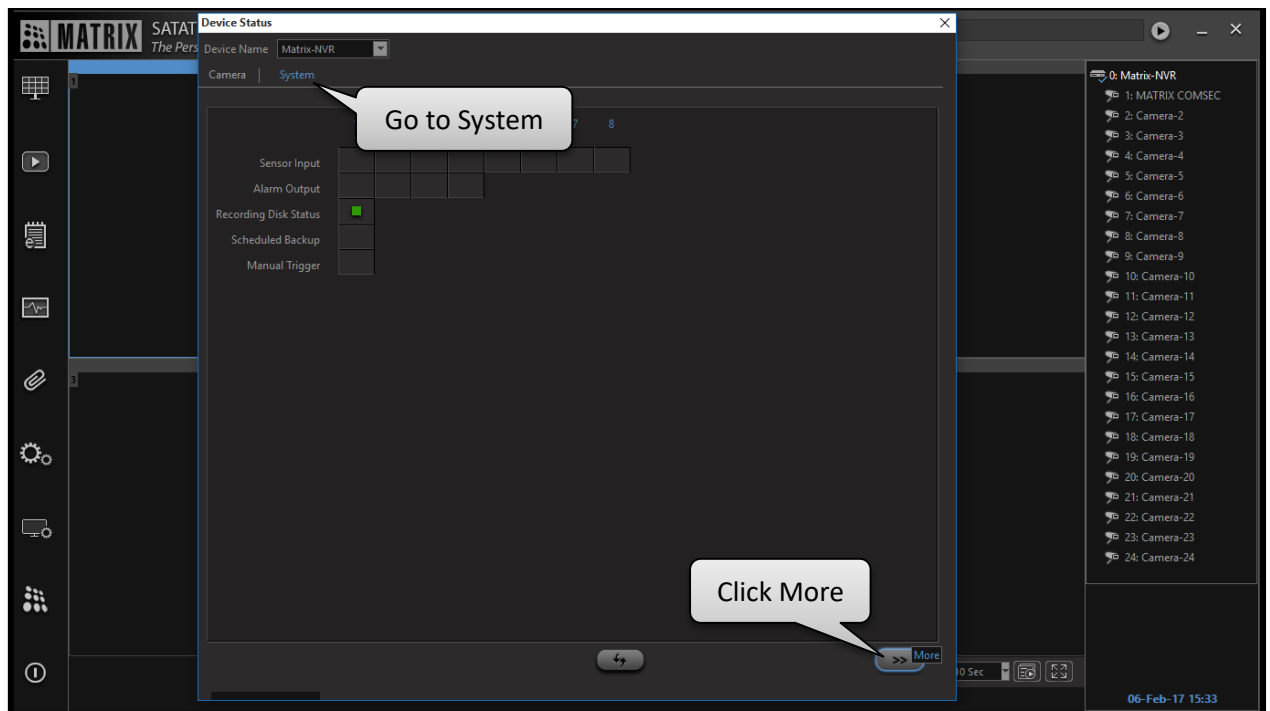
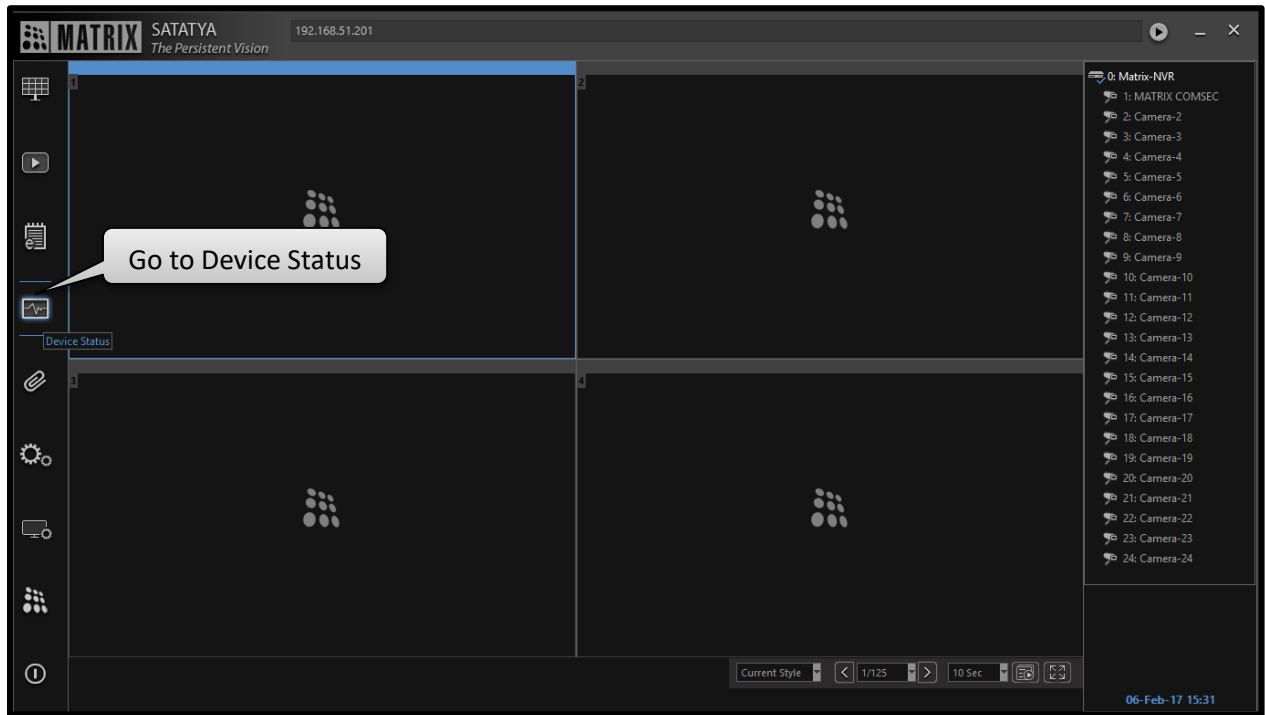
**To overcome this error, simply inform any user to reduce the number of cameras he/she is watching simultaneously or to log out.**

So, if we assume User 4 has logged out and User 6 is watching three cameras simultaneously, the stream limit will change as shown below:

User	No. of live view of cameras going on simultaneously	Remaining Stream Limit of SATATYA NVR24P
1	24	$72-24 = 48$
2	8	$48-8 = 40$
3	16	$40-16 = 24$
4	0	$24-0 = 24$
5	18	$24-18 = 6$
6	3	$6-3 = 3$

This is applicable to all SATATYA devices.

To know the present stream status of the device, follow below mentioned steps:



The screenshot displays the 'Advance Status' window with the following data:

Interface	Status	IP Address	Uplink Speed (Kbps)	Downlink Speed (Kbps)
LAN 1	Link Up	192.168.51.201	28	1044
LAN 2	Link Down	192.168.2.2	0	0
Broadband	No Modem			

**System**  
CPU Usage 10%  
Up Time 12 days 4 hours 0 minutes

**Network Streams**  
Live 1  
Playback 0

**Current Status**  
Active Recording Streams 0  
Estimated Storage 0 minutes

**Current Recording Rate**  
Per Hour 0 MB  
Per Day 0 MB

A callout box points to the 'Live 1' value in the Network Streams section, stating: "This shows the number of Live (on monitor) and Network Streams (on SATATYA Device Client)".

**Disclaimer:** The information contained in this e-mail and/or attachment may contain confidential or privileged information. Unauthorized use, disclosure or copying is strictly prohibited and may constitute unlawful act and can possibly attract legal action, civil and/or criminal. The contents of this message need not necessarily reflect or endorse the views of Matrix Comsec on any subject matter. Any action taken on or omitted in this message will be at the owner's risk and the originator of this message or Matrix Comsec does not take any responsibility or liability towards the same. If you are not the intended recipient, please notify us immediately and permanently delete the message.