

# FREQUENTLY ASKED QUESTIONS

SATATYA DVR/NVR/HVR

What  
When  
Which  
Where  
How  
Who  
Why

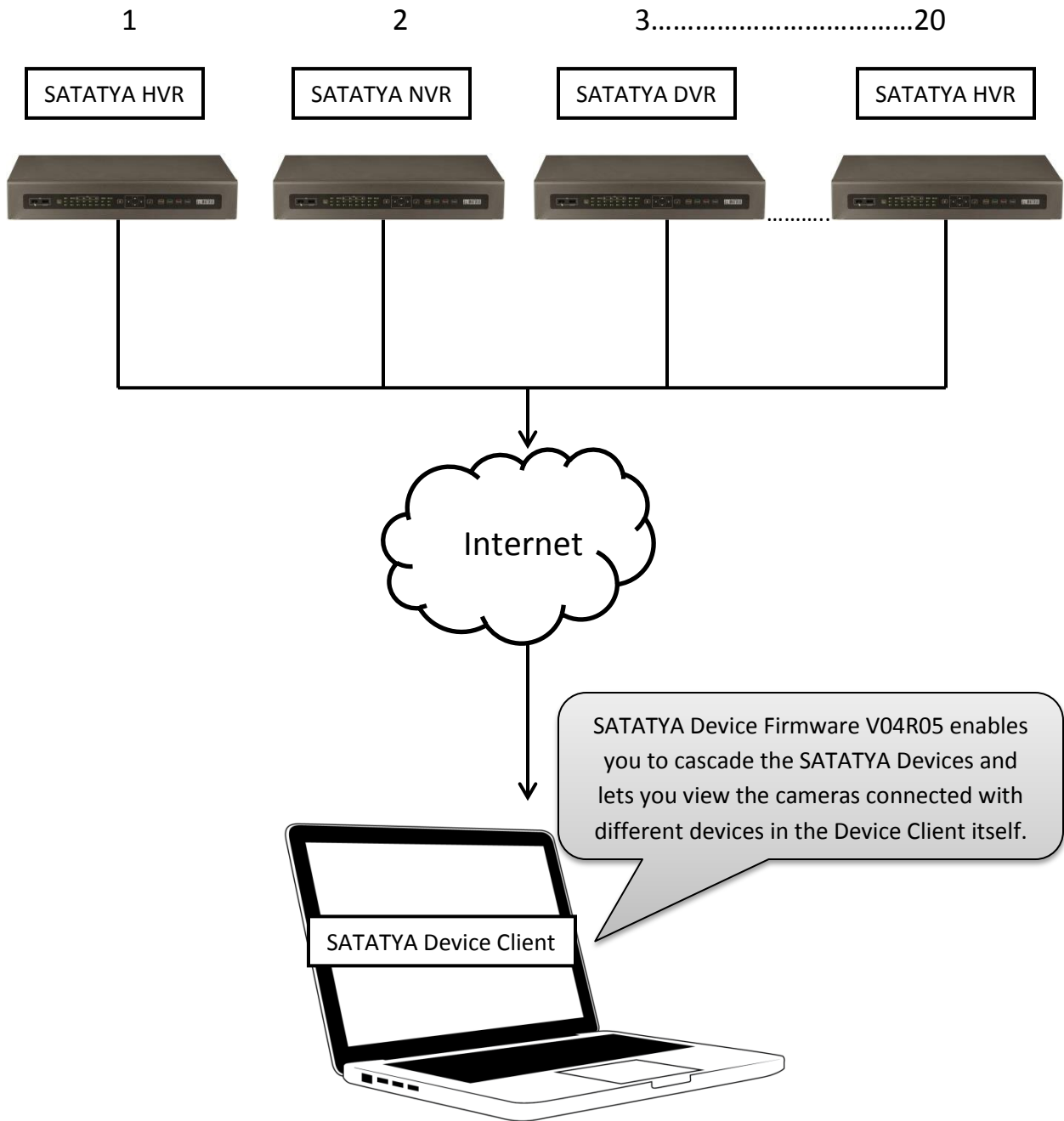


**Date:** 22<sup>nd</sup> June, 2015

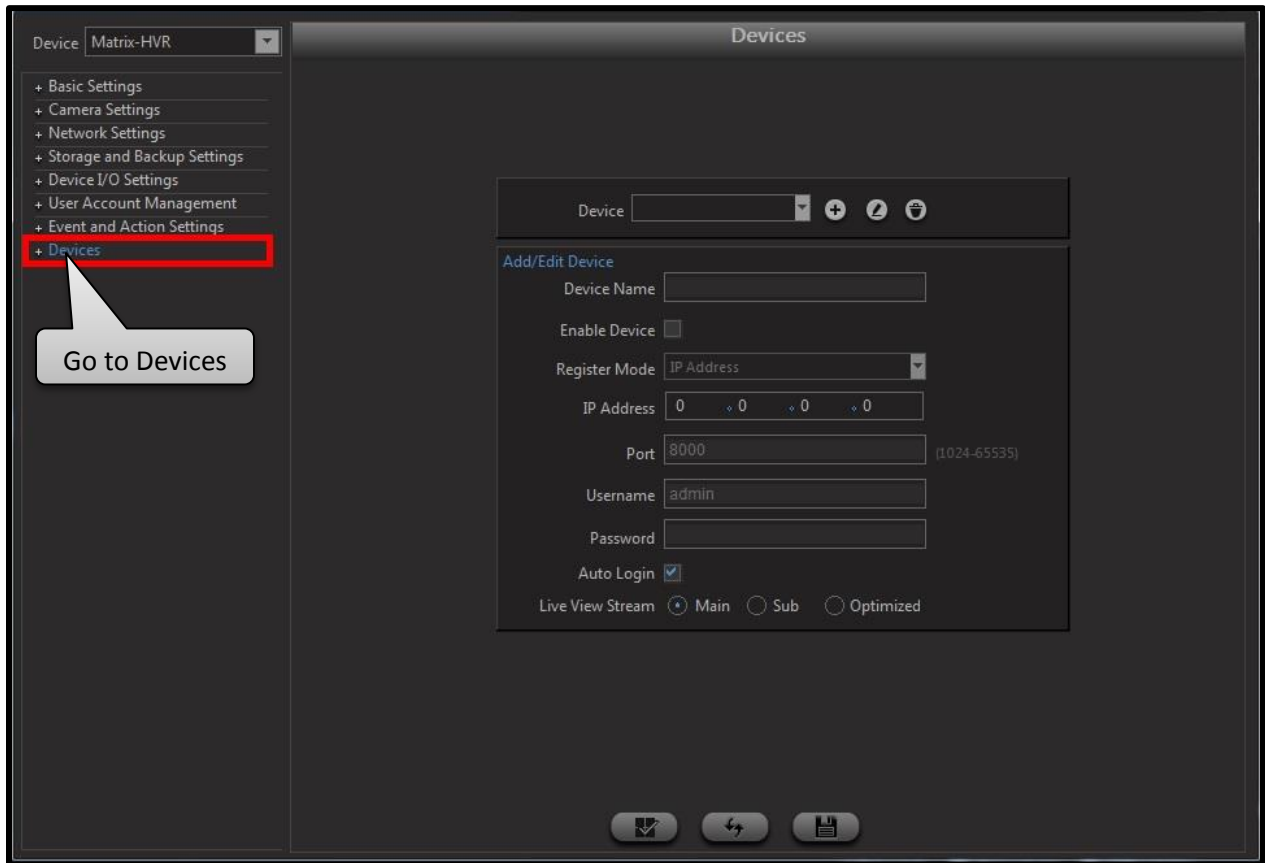
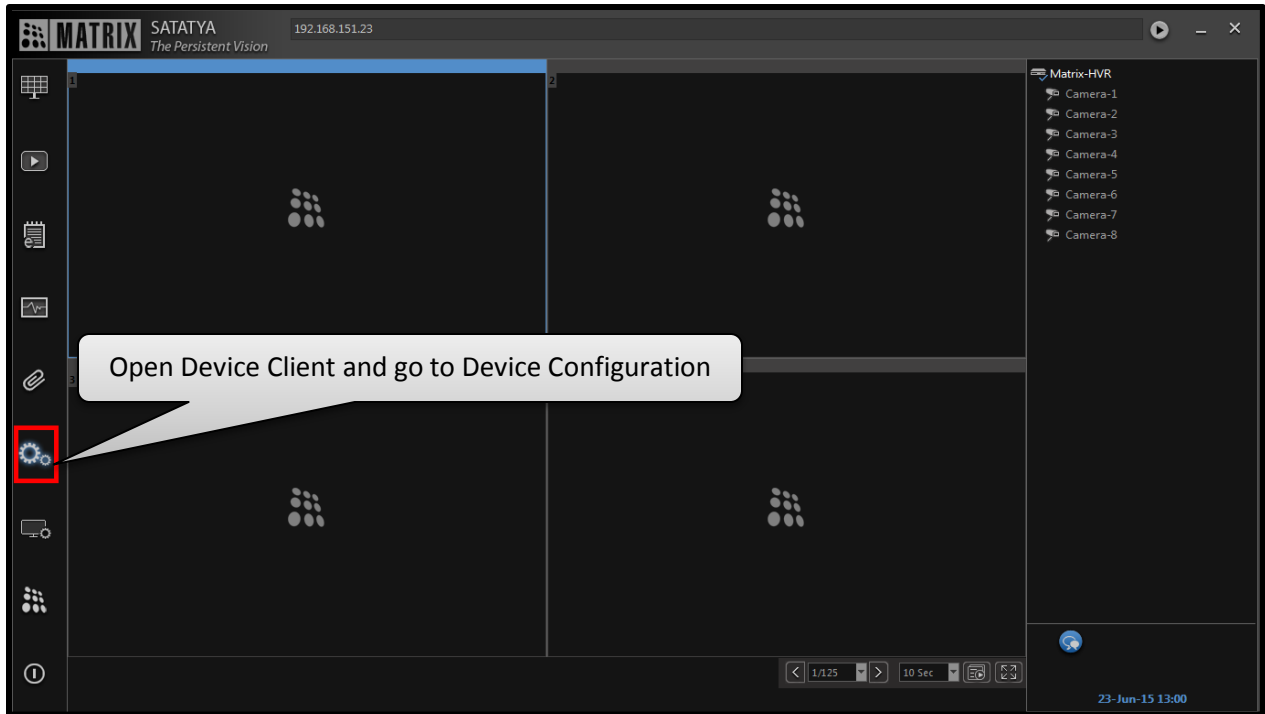
**Version:** V1R1

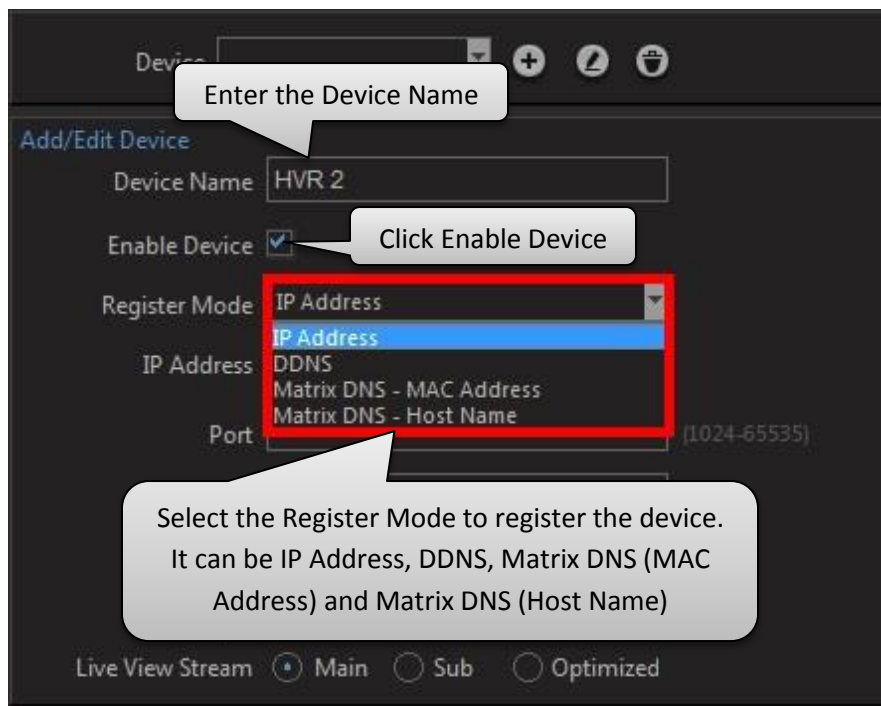
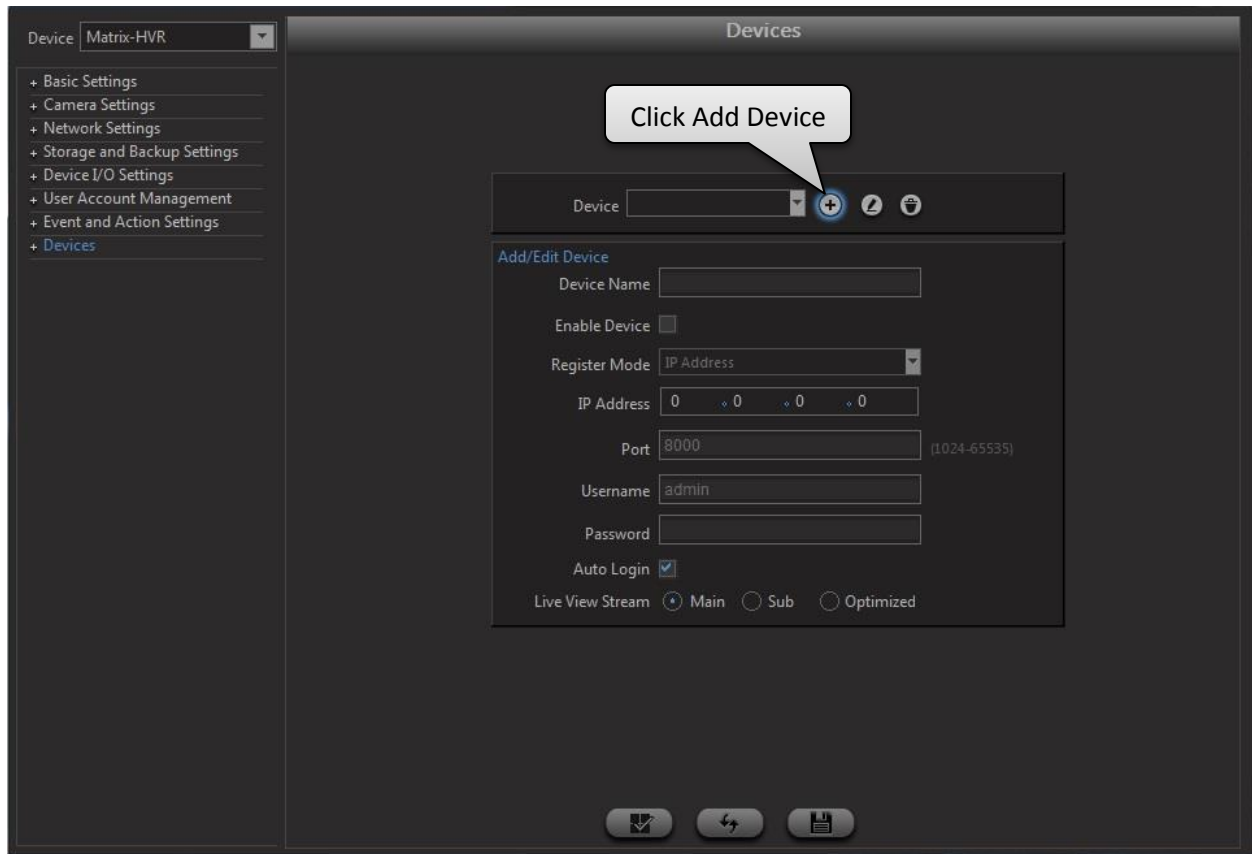
**Author:** Ashutosh Sharma

## How to configure SATATYA Devices in cascading using the SATATYA Device Client?



Upto 20 devices (SATATYA DVR/NVR/HVR) can be connected in cascading. Please make sure that, to use this feature, the device firmware of any device should be V04R05)





Device  + ↶ 🗑️

Add/Edit Device

Device Name

Enable Device

Register Mode

IP Address

Port  (1024-65535)

Username

Password

Auto Login

Live View Stream  Main  Sub  Optimized

Enter the IP Address of the device, TCP Port, Username and Password

Device  + ↶ 🗑️

Add/Edit Device

Device Name

Enable Device

Register Mode

IP Address

Port  (1024-65535)

Username

Password

Auto Login

Live View Stream  Main  Sub  Optimized

Click Auto Login to automatically login to the device.

Device

**Add/Edit Device**

Device Name

Enable Device

Register Mode

IP Address

Port  (1024-65535)

Username

Password

Auto Login

Live View Stream  Main  Sub  Optimized

Select the Live Stream of camera as Main, Sub or Optimized

Device

**Devices**

- + Basic Settings
- + Camera Settings
- + Network Settings
- + Storage and Backup Settings
- + Device I/O Settings
- + User Account Management
- + Event and Action Settings
- + Devices

**Add/Edit Device**

Device Name

Enable Device

Register Mode

IP Address

Port  (1024-65535)

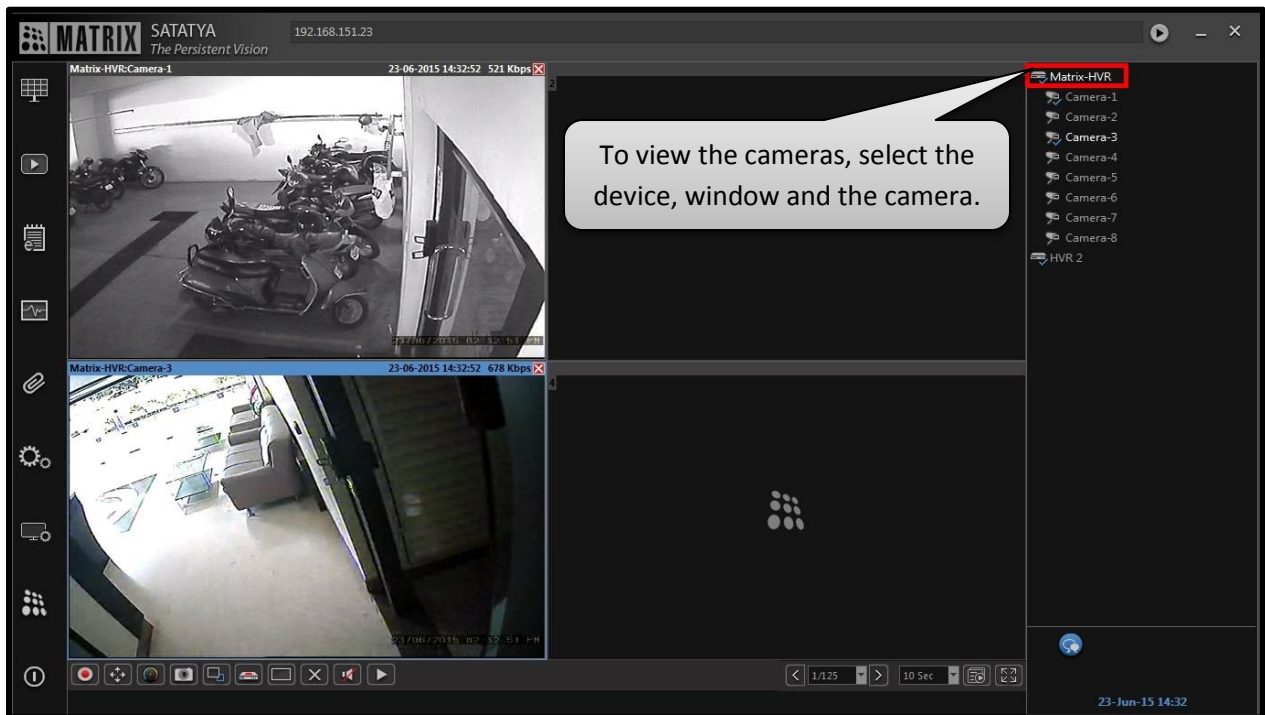
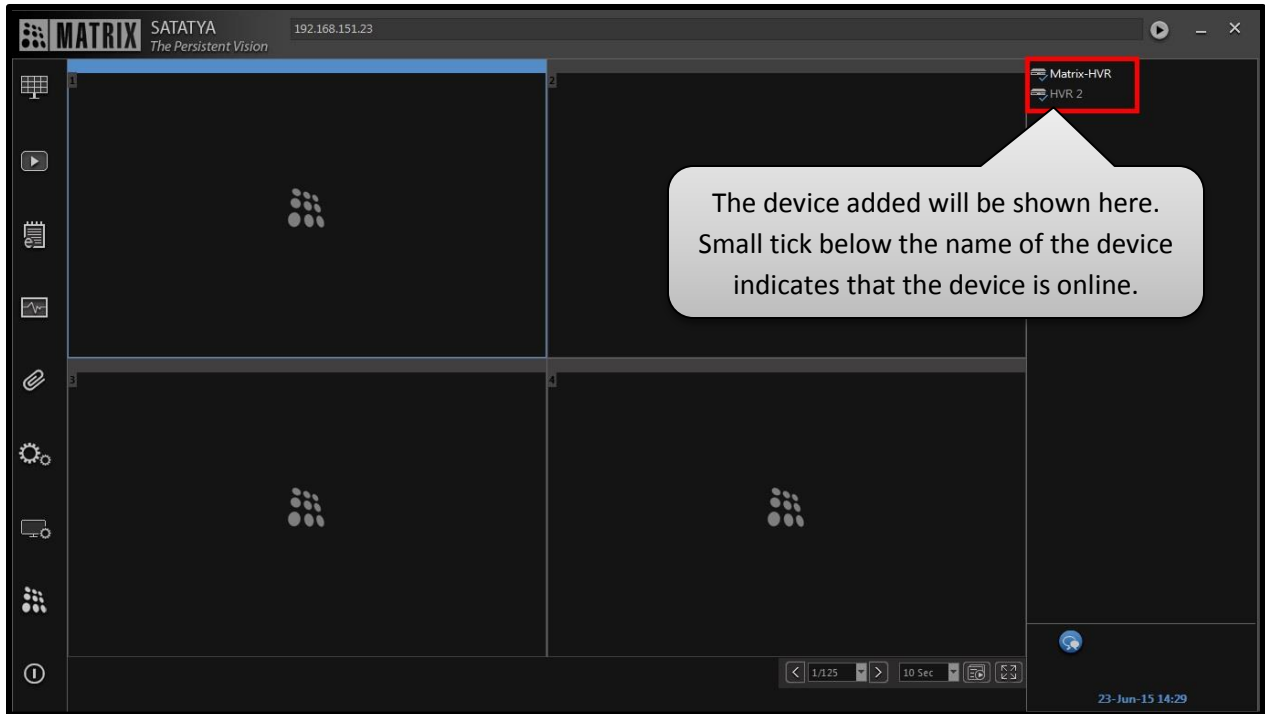
Username

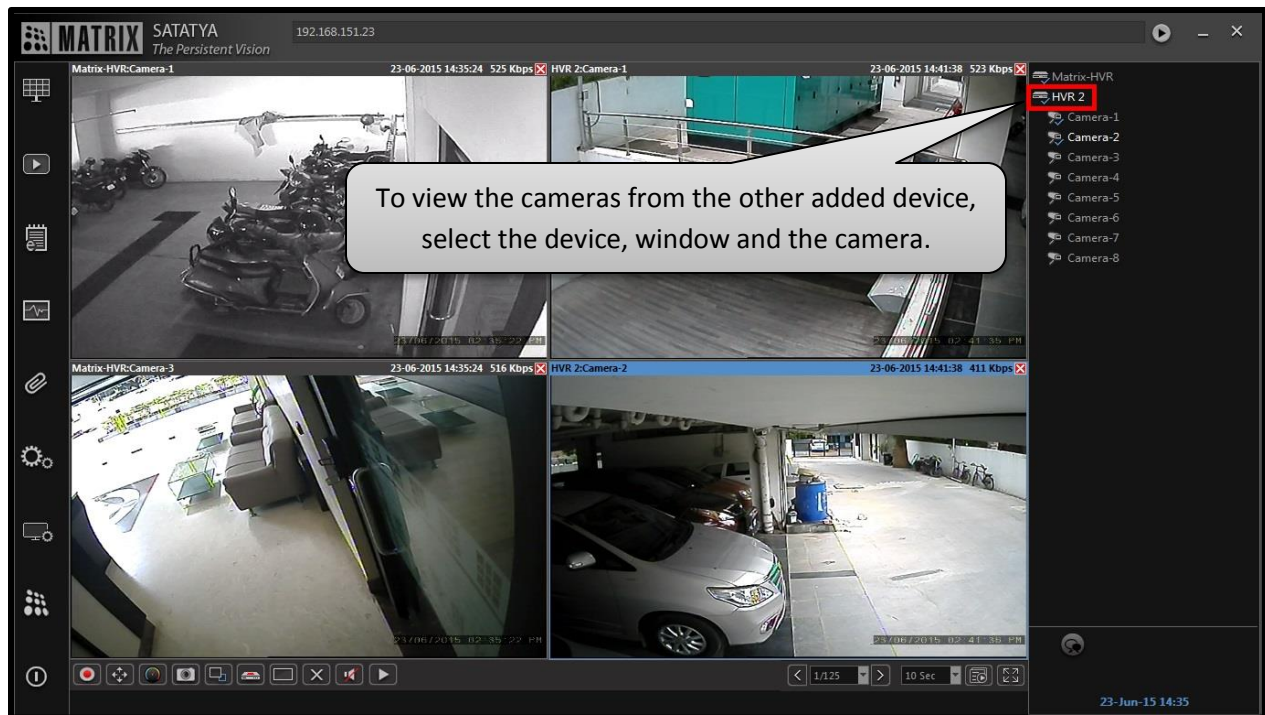
Password

Auto Login

Live View Stream  Main  Sub  Optimized

Click Save to save the configuration.





In this way, such 19 more devices can be connected and the live view of the cameras can be streamed.

**Disclaimer:** The information contained in this e-mail and/or attachment may contain confidential or privileged information. Unauthorized use, disclosure or copying is strictly prohibited and may constitute unlawful act and can possibly attract legal action, civil and/or criminal. The contents of this message need not necessarily reflect or endorse the views of Matrix Comsec on any subject matter. Any action taken or omitted on this message is not entirely at your risk and the originator of this message nor does Matrix Comsec take any responsibility or liability towards the same. If you are not the intended recipient, please notify us immediately and permanently delete the message.